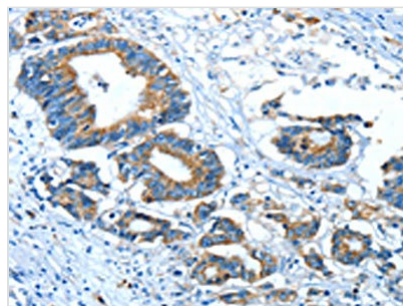




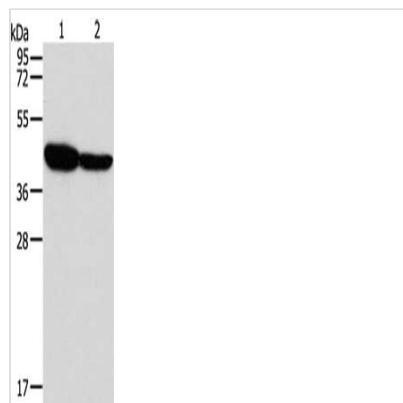
# GLRA1 Antibody

<b>Product Code</b>	CSB-PA870318
<b>Storage</b>	Upon receipt, store at -20°C or -80°C. Avoid repeated freeze.
<b>Uniprot No.</b>	P23415
<b>Immunogen</b>	Synthetic peptide of Human GLRA1
<b>Raised In</b>	Rabbit
<b>Species Reactivity</b>	Human,Mouse,Rat
<b>Tested Applications</b>	ELISA,WB,IHC;ELISA:1:2000-1:5000,WB:1:500-1:2000,IHC:1:25-1:100
<b>Relevance</b>	The protein encoded by this gene is a subunit of a pentameric inhibitory glycine receptor. The receptor mediates postsynaptic inhibition in the central nervous system. Defects in this gene are a cause of startle disease (STHE), also known as hereditary hyperekplexia or congenital stiff-person syndrome. Two transcript variants encoding different isoforms have been found for this gene.
<b>Form</b>	Liquid
<b>Conjugate</b>	Non-conjugated
<b>Storage Buffer</b>	-20°C, pH7.4 PBS, 0.05% NaN3, 40% Glycerol
<b>Purification Method</b>	Antigen affinity purification
<b>Isotype</b>	IgG
<b>Species</b>	Homo sapiens (Human)
<b>Target Names</b>	GLRA1

## Image



The image on the left is immunohistochemistry of paraffin-embedded Human colon cancer tissue using CSB-PA870318(GLRA1 Antibody) at dilution 1/30, on the right is treated with synthetic peptide. (Original magnification: x200)



Gel: 10%SDS-PAGE, Lysate: 40 µg, Lane 1-2: Mouse brain tissue, Human fetal brain tissue, Primary antibody: CSB-PA870318(GLRA1 Antibody) at dilution 1/500, Secondary antibody: Goat anti rabbit IgG at 1/8000 dilution, Exposure time: 1 minute

