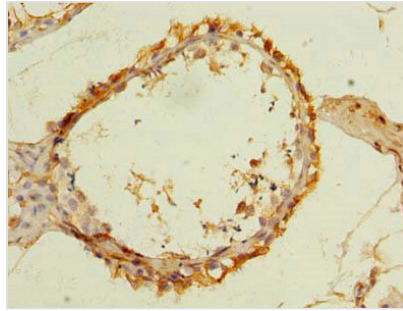


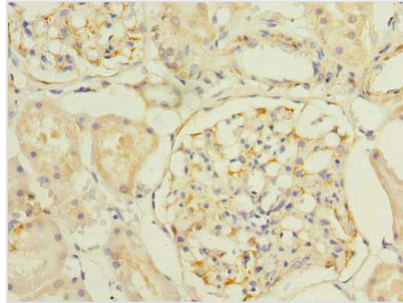


# SLC25A33 Antibody

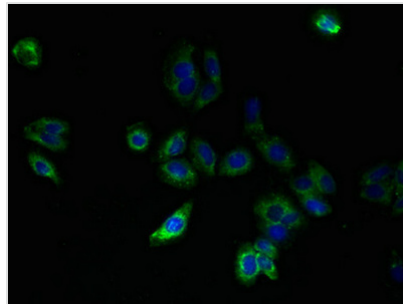
<b>Product Code</b>	CSB-PA874800LA01HU
<b>Storage</b>	Upon receipt, store at -20°C or -80°C. Avoid repeated freeze.
<b>Uniprot No.</b>	Q9BSK2
<b>Immunogen</b>	Recombinant Human Solute carrier family 25 member 33 protein (66-120AA)
<b>Raised In</b>	Rabbit
<b>Species Reactivity</b>	Human
<b>Tested Applications</b>	ELISA, IHC, IF; Recommended dilution: IHC:1:20-1:200, IF:1:50-1:200
<b>Relevance</b>	Mitochondrial transporter that imports/exports pyrimidine nucleotides into and from mitochondria (PubMed:25320081). Transports preferentially uracil, thymine, and cytosine (deoxy)nucleoside di- and triphosphates by an antiport mechanism (PubMed:25320081). Also transports guanine but not adenine (deoxy)nucleotides (PubMed:25320081). Is inhibited strongly by pyridoxal 5'-phosphate, 4,7-diphenyl-1,10-phenanthroline, tannic acid, and mercurials (mercury dichloride, mersalyl acid, p-hydroxymercuribenzoate) (PubMed:25320081). Participates in mitochondrial genome maintenance, regulation of mitochondrial membrane potential and mitochondrial respiration (PubMed:20453889). Upon INS or IGF1 stimulation regulates cell growth and proliferation by controlling mitochondrial DNA replication and transcription, the ratio of mitochondria-to nuclear-encoded components of the electron transport chain resulting in control of mitochondrial ROS production (PubMed:20453889, PubMed:17596519). Participates in dendritic cell endocytosis and may associate with mitochondrial oxidative phosphorylation (PubMed:14715278).
<b>Form</b>	Liquid
<b>Conjugate</b>	Non-conjugated
<b>Storage Buffer</b>	Preservative: 0.03% Proclin 300 Constituents: 50% Glycerol, 0.01M PBS, PH 7.4
<b>Purification Method</b>	>95%, Protein G purified
<b>Isotype</b>	IgG
<b>Clonality</b>	Polyclonal
<b>Alias</b>	Solute carrier family 25 member 33 (Bone marrow stromal cell mitochondrial carrier protein) (BMSC-MCP) (HuBMSC-MCP) (Protein PNC1), SLC25A33
<b>Species</b>	Human
<b>Research Area</b>	Signal Transduction
<b>Target Names</b>	SLC25A33
<b>Image</b>	



Immunohistochemistry of paraffin-embedded human testis tissue using CSB-PA874800LA01HU at dilution of 1:100



Immunohistochemistry of paraffin-embedded human kidney tissue using CSB-PA874800LA01HU at dilution of 1:100



Immunofluorescent analysis of HepG2 cells using CSB-PA874800LA01HU at dilution of 1:100 and Alexa Fluor 488-conjugated AffiniPure Goat Anti-Rabbit IgG(H+L)