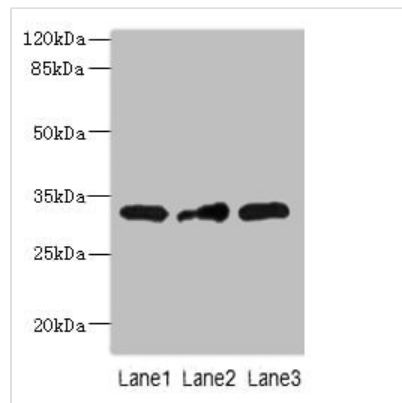




# MRPS2 Antibody

<b>Product Code</b>	CSB-PA897102LA01HU
<b>Storage</b>	Upon receipt, store at -20°C or -80°C. Avoid repeated freeze.
<b>Uniprot No.</b>	Q9Y399
<b>Immunogen</b>	Recombinant Human 28S ribosomal protein S2, mitochondrial protein (1-296AA)
<b>Raised In</b>	Rabbit
<b>Species Reactivity</b>	Human
<b>Tested Applications</b>	ELISA, WB; Recommended dilution: WB:1:1000-1:5000
<b>Relevance</b>	mitochondrial small ribosomal subunit, mitochondrion, structural constituent of ribosome, mitochondrial translation, mitophagy in response to mitochondrial depolarization, positive regulation of defense response to virus by host, translation, xenophagy
<b>Form</b>	Liquid
<b>Conjugate</b>	Non-conjugated
<b>Storage Buffer</b>	Preservative: 0.03% Proclin 300 Constituents: 50% Glycerol, 0.01M PBS, PH 7.4
<b>Purification Method</b>	>95%, Protein G purified
<b>Isotype</b>	IgG
<b>Clonality</b>	Polyclonal
<b>Alias</b>	28S ribosomal protein S2, mitochondrial (MRP-S2) (S2mt) (Mitochondrial small ribosomal subunit protein uS2m), MRPS2
<b>Species</b>	Human
<b>Research Area</b>	Epigenetics and Nuclear Signaling
<b>Target Names</b>	MRPS2

## Image



### Western blot

All lanes: MRPS2 antibody at 2.5µg/ml

Lane 1: HepG2 whole cell lysate

Lane 2: U251 whole cell lysate

Lane 3: MCF-7 whole cell lysate

Secondary

Goat polyclonal to rabbit IgG at 1/10000 dilution

Predicted band size: 33 kDa

Observed band size: 33 kDa