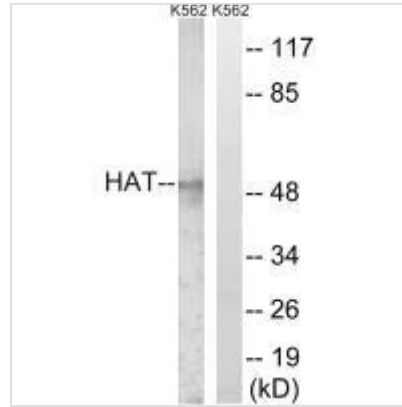




# HAT1 Antibody

<b>Product Code</b>	CSB-PA928867
<b>Storage</b>	Upon receipt, store at -20°C or -80°C. Avoid repeated freeze.
<b>Uniprot No.</b>	O14929
<b>Immunogen</b>	Synthesized peptide derived from Internal of Human HAT.
<b>Raised In</b>	Rabbit
<b>Species Reactivity</b>	Human, Mouse, Rat
<b>Specificity</b>	The antibody detects endogenous levels of total HAT protein.
<b>Tested Applications</b>	ELISA, WB; WB: 1:500-1:3000
<b>Relevance</b>	<p>Acetylates soluble but not nucleosomal histone H4 at 'Lys-5' (H4K5ac) and 'Lys-12' (H4K12ac) and, to a lesser extent, acetylates histone H2A at 'Lys-5' (H2AK5ac). Has intrinsic substrate specificity that modifies lysine in recognition sequence GXGKXG. May be involved in nucleosome assembly during DNA replication and repair as part of the histone H3.1 and H3.3 complexes. May play a role in DNA repair in response to free radical damage.</p> <p>Claudia J. Schroder-Adams, Bulletin of Canadian Petroleum Geology, Sep 1997; 45: 356 - 376. Pil-Hoon Park, Am J Physiol Gastrointest Liver Physiol, Dec 2005; 289: G1124 - G1136. Claudia J. Schroeder-Adams, Palaios, Aug 1998; 13: 361 - 375. L. J. Patric</p>
<b>Form</b>	Rabbit IgG in phosphate buffered saline (without Mg <sup>2+</sup> and Ca <sup>2+</sup> ), pH 7.4, 150mM NaCl, 0.02% sodium azide and 50% glycerol.
<b>Purification Method</b>	The antibody was affinity-purified from rabbit antiserum by affinity-chromatography using epitope-specific immunogen.
<b>Clonality</b>	Polyclonal
<b>Alias</b>	Histone acetyltransferase 1; Histone acetyltransferase type B catalytic subunit; EC 2.3.1.48; HAT1;
<b>Product Type</b>	Polyclonal Antibody
<b>Species</b>	Homo sapiens (Human)
<b>Target Names</b>	HAT1
<b>Image</b>	



Western blot analysis of extracts from K562 cells, using HAT antibody.