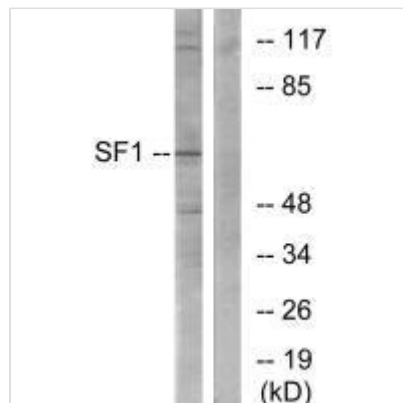




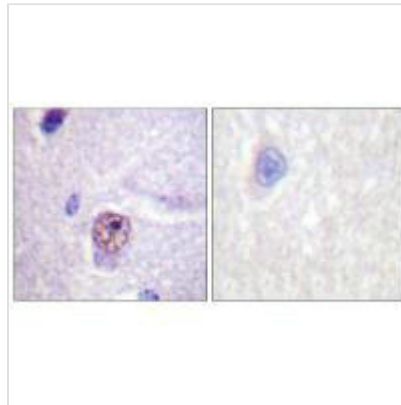
# SF1 (Ab-82) Antibody

<b>Product Code</b>	CSB-PA963117
<b>Storage</b>	Upon receipt, store at -20°C or -80°C. Avoid repeated freeze.
<b>Uniprot No.</b>	Q15637
<b>Immunogen</b>	Synthesized non-phosphopeptide derived from Human SF1 around the phosphorylation site of serine 82 (S-P-S(p)-P-E).
<b>Raised In</b>	Rabbit
<b>Species Reactivity</b>	Human, Mouse
<b>Specificity</b>	The antibody detects endogenous levels of total SF1 protein.
<b>Tested Applications</b>	ELISA, WB, IHC, IF; WB: 1:500-1:3000, IHC: 1:50-1:100, IF: 1:100-1:500
<b>Relevance</b>	<p>Necessary for the ATP-dependent first step of spliceosome assembly. Binds to the intron branch point sequence (BPS) 5'-UACU AAC-3' of the pre-mRNA. May act as transcription repressor.</p> <p>Susan Y. Park, Development, May 2005; 132: 2415 - 2423.          Dujin Zhou, Mol. Endocrinol., Jul 2000; 14: 986.          Dagmar Wilhelm, Genes &amp; Dev., Jul 2002; 16: 1839.          Philipp Gut, Development, Oct 2005; 132: 4611 - 4619.</p>
<b>Form</b>	Rabbit IgG in phosphate buffered saline (without Mg <sup>2+</sup> and Ca <sup>2+</sup> ), pH 7.4, 150mM NaCl, 0.02% sodium azide and 50% glycerol.
<b>Purification Method</b>	The antibody was affinity-purified from rabbit antiserum by affinity-chromatography using epitope-specific immunogen.
<b>Clonality</b>	Polyclonal
<b>Alias</b>	BBP; CW17; Mammalian branch point binding protein mBBP; SF01; Splicing factor 1
<b>Product Type</b>	Polyclonal Antibody
<b>Species</b>	Homo sapiens (Human)
<b>Target Names</b>	SF1

## Image



Western blot analysis of extracts from COLO205 cells, using SF1 (Ab-82) antibody.



Immunohistochemistry analysis of paraffin-embedded human brain tissue using SF1 (Ab-82) antibody.



Immunofluorescence analysis of HeLa cells, using SF1 (Ab-82) antibody.