



Recombinant Streptococcus pneumoniae serotype 4 Pneumolysin(ply)

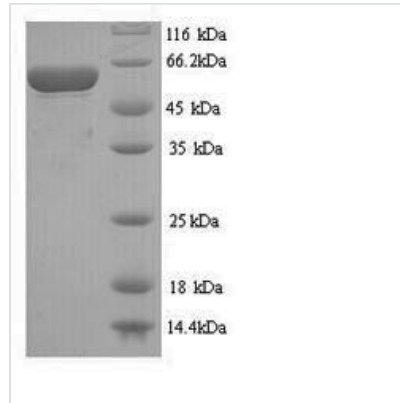
Product Code	CSB-YP314690FMW
Relevance	Sulfhydryl-activated toxin that causes cytolysis by forming pores in cholesterol containing host mbranes. After binding to target mbranes, the protein undergoes a major conformation change, leading to its insertion in the host mbrane and formation of an oligomeric pore complex. Cholesterol may be required for binding to host mbranes, mbrane insertion and pore formation. Can be reversibly inactivated by oxidation .
Storage	The shelf life is related to many factors, storage state, buffer ingredients, storage temperature and the stability of the protein itself. Generally, the shelf life of liquid form is 6 months at -20°C/-80°C. The shelf life of lyophilized form is 12 months at -20°C/-80°C.
Uniprot No.	P0C2J9
Storage Buffer	Tris-based buffer,50% glycerol
Alias	Thiol-activated cytolysin
Product Type	Recombinant Protein
Species	Streptococcus pneumoniae serotype 4 (strain ATCC BAA-334 / TIGR4)
Purity	Greater than 90% as determined by SDS-PAGE.
Sequence	ANKAVNDFILAMNYDKKKLLTHQGESIENRFIKEGNQLPDEFVVIERKKRSLST NTSDISVTATNDSRLYPGALLVVDETLLENNPTLLAVDRAPMTYSIDLPGGLASS DSFLQVEDPSNSSVRGAVNDLLAKWHQDYGQVNNVPARMQYEKITAHSMEQ LKVKFGSDFEKTGNSLDIDFNSVHSGEKQIQIVNFKQIYYTVSVDVAVKPNPGDVF QDVTVEDLKQRGISAERPLVYISSVAYGRQVYLKLETTSKSDEVEAAFEALIK GVKVAPQTEWKQILDNTEVKAVILGGDPSSGARVVTGKVDMVEDLIQEGSRFT ADHPGLPISYTTSFRLDNVVATFQNSTDYVETKVTAYRNGDLLLDHSGAYVAQ YYITWNELSYDHQGKEVLTPKAWDRNGQDLTAHFTTSIPLKGNVRNLSVKIRE CTGLAWEWVRTVYEKTDLPLVRKRTISIWGTTLYPQVEDKVEND
Lead Time	3-7 business days
Research Area	Others
Source	Yeast
Gene Names	ply
Protein Names	Recommended name: PneumolysinAlternative name(s): Thiol-activated cytolysin
Expression Region	2-471aa
Notes	Repeated freezing and thawing is not recommended. Store working aliquots at 4°C for up to one week.
Tag Info	N-terminal 6xHis-tagged

**Mol. Weight**

54.8kDa

Protein Description

Full Length of Mature Protein

Image

(Tris-Glycine gel) Discontinuous SDS-PAGE (reduced) with 5% enrichment gel and 15% separation gel.