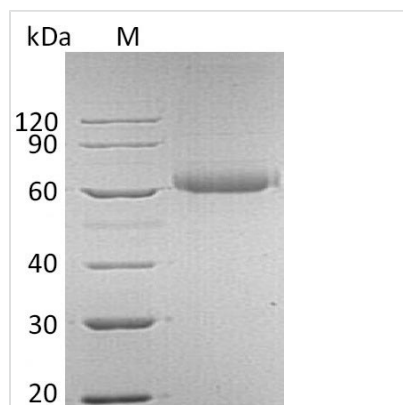




# Recombinant Human Fibroblast growth factor receptor-like 1 (FGFRL1), partial (Active)

<b>Product Code</b>	CSB-AP003671HU
<b>Uniprot No.</b>	Q8N441
<b>Form</b>	Lyophilized powder
<b>Storage Buffer</b>	Lyophilized from a 0.2 µm filtered 20 mM Tris-HCl, 150 mM NaCl, pH 8.0
<b>Product Type</b>	Growth Factor
<b>Immunogen Species</b>	Homo sapiens (Human)
<b>Biological Activity</b>	The ED50 as determined by its ability to bind Human FGF Basic in functional ELISA is less than 5 ug/ml.
<b>Purity</b>	Greater than 95% as determined by SDS-PAGE.
<b>Sequence</b>	ARGPPKMADKVVPRQVARLGRTVRLQCPVEGDPPPLTMWTKDGRTHSGWS RFRVLPQGLKVQKQVEREDAGVYVCKATNGFGSLSVNYTLVVLDDISPGKESLG PDSSSGGQEDPASQQWARPRFTQPSKMRRRVIARPVGSSVRLKCVASGHPR PDITWMKDDQALTRPEAAEPRKKKWTLSLKNLRPEDSGKYTCRVSNRAGAIN ATYKVDVIQRTRSKPVLGTGHPVNTTVDFGGTTSFQCKVRSDVKPVIQWLKRV EYGAEGRHNSTIDVGGQKFVVLPTGDVWSRPDGSYLNKLLITRARQDDAGMY ICLGANTMGYSFRSAFLTVPDPKPPGPPVASSSSATSLPWP
<b>Lead Time</b>	Basically, we can dispatch the products out in 5-10 working days after receiving your orders. Delivery time may differ from different purchasing way or location, please kindly consult your local distributors for specific delivery time.
<b>Research Area</b>	Signal Transduction
<b>Source</b>	Mammalian cell
<b>Gene Names</b>	FGFRL1
<b>Expression Region</b>	25-378aa
<b>Notes</b>	Repeated freezing and thawing is not recommended. Store working aliquots at 4°C for up to one week.
<b>Tag Info</b>	C-terminal 6xHis-tagged
<b>Mol. Weight</b>	39.9 kDa
<b>Protein Description</b>	Extracellular Domain
<b>Image</b>	



(Tris-Glycine gel) Discontinuous SDS-PAGE (reduced) with 5% enrichment gel and 15% separation gel.

### Endotoxin

Less than 1.0 EU/μg as determined by LAL method.

### Reconstitution

We recommend that this vial be briefly centrifuged prior to opening to bring the contents to the bottom. Please reconstitute protein in deionized sterile water to a concentration of 0.1-1.0 mg/mL. We recommend to add 5-50% of glycerol (final concentration) and aliquot for long-term storage at -20°C/-80°C. Our default final concentration of glycerol is 50%. Customers could use it as reference.