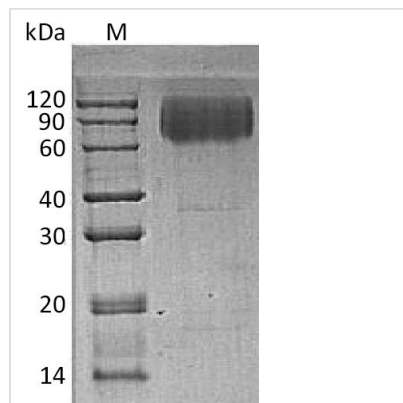




Recombinant Human Lysosome-associated membrane glycoprotein 2 (LAMP2), partial (Active)

Product Code	CSB-AP005471HU
Uniprot No.	P13473
Form	Lyophilized powder
Storage Buffer	Lyophilized from a 0.2 µm filtered 20 mM PB, 150 mM NaCl, pH 7.2
Product Type	Other
Immunogen Species	Homo sapiens (Human)
Biological Activity	The ED50 as determined by its ability to bind Human LGALS-3 in functional ELISA is less than 30 ug/ml.
Purity	Greater than 95% as determined by SDS-PAGE.
Sequence	LELNLTDSENATCLYAKWQMNFTVRYETTNNKTYKTVTISDHGTVTYNGSICGD DQNGPKIAVQFGPGFSWIANFTKAASTYSIDSVSFSYNTGDNTTFPDAEDKGIL TVDELLAIRIPLNDLFRCSLSTLEKNDVVQHYWDVLVQAFVQNGTVSTNEFLC DKDKTSTVAPTIHTTVPSPTTPTPKEKPEAGTYSVNNGNDTCLLATMGLQLNI TQDKVASVININPNTTHSTGSCRSHALLRLNSSTIKYLDVFVAVKNENRFYLKE VNISMVYLVNGSVFSIANNNLSYWDAPLGSSYMCNKEQTVSVSGAFQINTFDLR VQPFNVTQGKYSTAQDCSADDDNF
Lead Time	Basically, we can dispatch the products out in 5-10 working days after receiving your orders. Delivery time may differ from different purchasing way or location, please kindly consult your local distributors for specific delivery time.
Research Area	Cancer
Source	Mammalian cell
Gene Names	LAMP2
Expression Region	29-375aa
Notes	Repeated freezing and thawing is not recommended. Store working aliquots at 4°C for up to one week.
Tag Info	C-terminal 6xHis-tagged
Mol. Weight	33.94 kDa
Protein Description	Partial
Image	



(Tris-Glycine gel) Discontinuous SDS-PAGE (reduced) with 5% enrichment gel and 15% separation gel.

Description

Recombinant Human LAMP2 is a partial lysosome-associated membrane glycoprotein 2 (CD107b) that features the 29-375aa expression region. This protein is an essential tool for cancer research and is obtained from mammalian cells with a C-terminal 6xHis-tag. With a purity of greater than 95% as determined by SDS-PAGE, LAMP2 has an endotoxin level of less than 1.0 EU/μg as assessed by the LAL method. The functional activity of LAMP2 is demonstrated by its capacity to bind human LGALS-3 in a functional ELISA, with an ED₅₀ of less than 30 μg/ml. This lyophilized powder format enables easy storage and application across various research projects.

Endotoxin

Less than 1.0 EU/μg as determined by LAL method.

Reconstitution

We recommend that this vial be briefly centrifuged prior to opening to bring the contents to the bottom. Please reconstitute protein in deionized sterile water to a concentration of 0.1-1.0 mg/mL. We recommend to add 5-50% of glycerol (final concentration) and aliquot for long-term storage at -20°C/-80°C. Our default final concentration of glycerol is 50%. Customers could use it as reference.