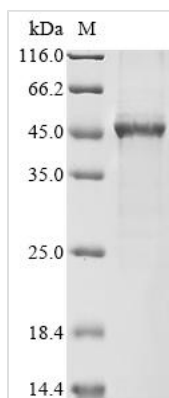




Recombinant Yersinia enterocolitica serotype O:8 / biotype 1B Propionate kinase (tdcD)

| | |
|----------------------------|--|
| Product Code | CSB-BP375544YAK |
| Storage | The shelf life is related to many factors, storage state, buffer ingredients, storage temperature and the stability of the protein itself. Generally, the shelf life of liquid form is 6 months at -20°C/-80°C. The shelf life of lyophilized form is 12 months at -20°C/-80°C. |
| Uniprot No. | A1JIM9 |
| Form | Liquid or Lyophilized powder |
| Storage Buffer | If the delivery form is liquid, the default storage buffer is Tris/PBS-based buffer, 5%-50% glycerol. If the delivery form is lyophilized powder, the buffer before lyophilization is Tris/PBS-based buffer, 6% Trehalose. |
| Product Type | Recombinant Protein |
| Immunogen Species | Yersinia enterocolitica serotype O:8 / biotype 1B (strain NCTC 13174 / 8081) |
| Purity | Greater than 85% as determined by SDS-PAGE. |
| Sequence | MTLNPTVLVINCGSSSIKFSVLTADNCEAVISGIADGIGTEKPFLRIDRVTTQFQLA KWNYS DALAAIADELDKRGLSKSISLIGHRIAHGGEIFSESVLIDDRVVEEIKKVS PLAPLHNYANLHGVGAARQLFPGIKQVAVFDTGFHQTLKPEAYLYALPYRYFR EQGVRRYGFHGTSYRYVVGEEAASFLGFDGSDCGLIAHLGNGASLCAVQDGK SVDTSMGMTPLEGLIMGTRSGDVDY GALAYLARQTGQSLEDLDHVMNKESGL LGISGLSADMRVLENAYHEGHEGARLAINTFVHRLARHIGGHASSLRFRFDALIF TGGIGENSSLIRQLTLEHLAVFGIDIDHAKNKRLQHGT SQIITARSRVTA AVIPT NEEKMIALDAIRLGYAQQGT VVLEAVI |
| Lead Time | 3-7 business days |
| Research Area | Others |
| Source | Baculovirus |
| Gene Names | tdcD |
| Expression Region | 1-406aa |
| Notes | Repeated freezing and thawing is not recommended. Store working aliquots at 4°C for up to one week. |
| Tag Info | C-terminal 6xHis-tagged |
| Mol. Weight | 49.6 kDa |
| Protein Description | Full Length |
| Image | |



(Tris-Glycine gel) Discontinuous SDS-PAGE (reduced) with 5% enrichment gel and 15% separation gel.

Reconstitution

We recommend that this vial be briefly centrifuged prior to opening to bring the contents to the bottom. Please reconstitute protein in deionized sterile water to a concentration of 0.1-1.0 mg/mL. We recommend to add 5-50% of glycerol (final concentration) and aliquot for long-term storage at -20^o/-80^o. Our default final concentration of glycerol is 50%. Customers could use it as reference.