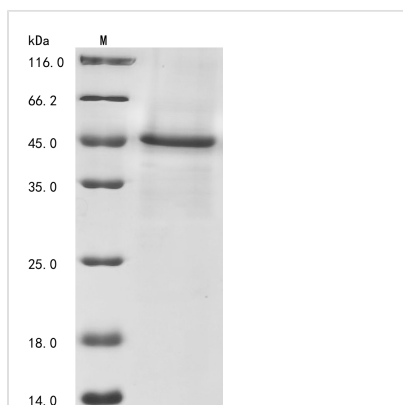




Recombinant *Macaca fascicularis* Heat-stable enterotoxin receptor (GUCY2C), partial

Product Code	CSB-BP3779MOV
Storage	The shelf life is related to many factors, storage state, buffer ingredients, storage temperature and the stability of the protein itself. Generally, the shelf life of liquid form is 6 months at -20°C/-80°C. The shelf life of lyophilized form is 12 months at -20°C/-80°C.
Uniprot No.	N/A
Form	Liquid or Lyophilized powder
Storage Buffer	If the delivery form is liquid, the default storage buffer is Tris/PBS-based buffer, 5%-50% glycerol. If the delivery form is lyophilized powder, the buffer before lyophilization is Tris/PBS-based buffer, 6% Trehalose.
Product Type	Recombinant Protein
Immunogen Species	<i>Macaca fascicularis</i> (Crab-eating macaque) (<i>Cynomolgus</i> monkey)
Purity	Greater than 90% as determined by SDS-PAGE.
Sequence	SQVSQNCHNGSYEISVLMMDNSAFAEPLNVEDAVNEGLEIVRGRLQNAGLN VTVNASFMYS DGLIHNSGDCRSSTCEGLDLLRKISNAKRMGCVLMGPSCTYST FQMYLDTELSYPMISAGSFGLSCDYKETLRLMSPARKLTYFLVNFWKNDLP FKTYSWSTSYVYKNGTESEDCFWYLNALASVSYSFSHELKFLVLRQDKEFQ DILMDHNRKSNVIVMCGDPQFLYKLGDRVAEDIVILVDLFNDQYFEDNVTA PDYMKNVLVLTQSPGNLLNSSFSRNLSPTKRDFALAYLNGILLFGHMLKTFLE NGENITTPKFAHAFRNLTFEGYDGPVTLDDWGDVDSTMVLLYTSVDTKKYKVL LTYDTHVNQTNPVDMSPFTFWKNSKLPNDITDRGPQ
Lead Time	Delivery time may differ from different purchasing way or location, please kindly consult your local distributors for specific delivery time.
Research Area	others
Source	Baculovirus
Gene Names	GUCY2C
Expression Region	24-430aa
Notes	Repeated freezing and thawing is not recommended. Store working aliquots at 4°C for up to one week.
Tag Info	C-terminal 6xHis-tagged
Mol. Weight	51.7 kDa
Protein Description	Partial
Image	



(Tris-Glycine gel) Discontinuous SDS-PAGE (reduced) with 5% enrichment gel and 15% separation gel.

Reconstitution

We recommend that this vial be briefly centrifuged prior to opening to bring the contents to the bottom. Please reconstitute protein in deionized sterile water to a concentration of 0.1-1.0 mg/mL. We recommend to add 5-50% of glycerol (final concentration) and aliquot for long-term storage at -20^o/-80^o. Our default final concentration of glycerol is 50%. Customers could use it as reference.