

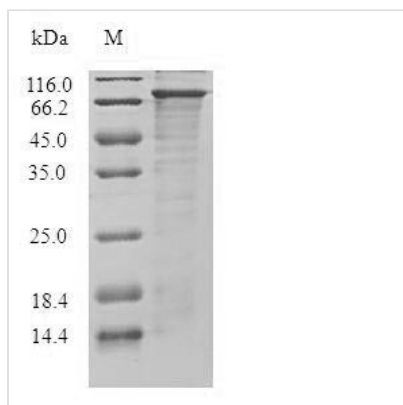


Recombinant Human Diacylglycerol kinase epsilon (DGKE)

Product Code	CSB-CF006835HU
Relevance	Highly selective for arachidonate-containing species of diacylglycerol (DAG). May terminate signals transmitted through arachidonoyl-DAG or may contribute to the synthesis of phospholipids with defined fatty acid composition.
Storage	The shelf life is related to many factors, storage state, buffer ingredients, storage temperature and the stability of the protein itself. Generally, the shelf life of liquid form is 6 months at -20°C/-80°C. The shelf life of lyophilized form is 12 months at -20°C/-80°C.
Uniprot No.	P52429
Product Type	Transmembrane Protein
Immunogen Species	Homo sapiens (Human)
Purity	Greater than 85% as determined by SDS-PAGE.
Sequence	MEAERRPAPGSPSEGLFADGHLILWTLCSVLLPVFITFWCSLQRSRRQLHRRD IFRKSKHGWRTDLFSQPTYCCVCAQHILQGAFCDCGLRVDEGCLRKADKR FQCKEIMLKNDTKVLDAMPHHWIRGNVPLCSYCMVCKQQCGCQPKLCDYRCI WCQKTVHDECMKNSLKNEKCDFGEFKNLIIPPSYLT SINQMRKDKKTDYEVLA SKLGKQWTPLIILANSRSGTNMGEGLLGEFRILLNPVQVFDVTKTPPIKALQLCT LLPYYSARVLVCGGDGTGVWVLDVDDMKIKGQEKYIPQVAVLPLGTGNDLS NTLGWGTGYAGEIPVAQVLRNVMEADGIKLDRWKVQVTNKGYYNLRKPKEFT MNNYFSVGPDALMALNFHAHREKAPSLFSSRILNKAVYLFYGTKDCLVQECKD LNKKVELELDGERVALPSLEGIIVLNIGYWGGGCRLWEGMGEDETYPLARHDDG LLEVVG VYGSFHC AQIQVKLANPFRIGQAHTVRLILKCSMMPMQVDGEPWAQ GPCTVTITHKTHAMMLYFSGEQTDDDISSTSDQEDIKATE
Lead Time	Delivery time may differ from different purchasing way or location, please kindly consult your local distributors for specific delivery time.
Research Area	Signal Transduction
Source	in vitro E.coli expression system
Gene Names	DGKE
Protein Names	Diglyceride kinase epsilon
Expression Region	1-567aa
Notes	Repeated freezing and thawing is not recommended. Store working aliquots at 4°C for up to one week.
Tag Info	N-terminal 10xHis-SUMO-tagged and C-terminal Myc-tagged
Mol. Weight	83.9kDa
Protein Description	Full Length



Image



(Tris-Glycine gel) Discontinuous SDS-PAGE (reduced) with 5% enrichment gel and 15% separation gel.

Reconstitution

We recommend that this vial be briefly centrifuged prior to opening to bring the contents to the bottom. Please reconstitute protein in deionized sterile water to a concentration of 0.1-1.0 mg/mL. We recommend to add 5-50% of glycerol (final concentration) and aliquot for long-term storage at -20°C/-80°C. Our default final concentration of glycerol is 50%. Customers could use it as reference.