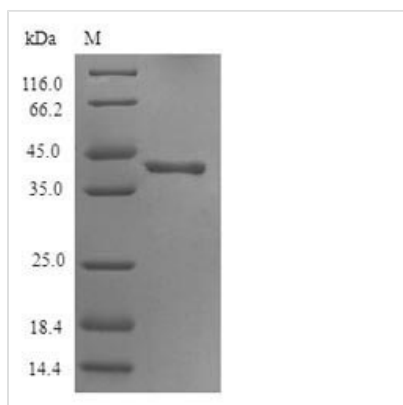




Recombinant Human 5-hydroxytryptamine receptor 3D (HTR3D), partial

Product Code	CSB-CF747864HU
Relevance	This is one of the several different receptors for 5-hydroxytryptamine (serotonin), a biogenic hormone that functions as a neurotransmitter, a hormone, and a mitogen. This receptor is a ligand-gated ion channel, which when activated causes fast, depolarizing responses. It is a cation-specific, but otherwise relatively nonselective, ion channel.
Storage	The shelf life is related to many factors, storage state, buffer ingredients, storage temperature and the stability of the protein itself. Generally, the shelf life of liquid form is 6 months at -20°C/-80°C. The shelf life of lyophilized form is 12 months at -20°C/-80°C.
Uniprot No.	Q70Z44
Product Type	Transmembrane Protein
Immunogen Species	Homo sapiens (Human)
Purity	Greater than 90% as determined by SDS-PAGE.
Sequence	VAIRRRCRPSPYVVNFLVPSGILIAIDALSFYLPLESGNCAPFKMTVLLGYSVFLL MMNDLLPATSTSSHASLVAPLALMQTLPAGVYFALCLSLMVGSLLLETIFITHLL HVATTQPLPLPRWLHSLLLHCTGQGRCCPTAPQKGNKGPGLTPTHLPGVKEP EVSAGQMPGPGEAELTGGSEWTRAQREHEAQKQHSVELWVQFSHAMDALL FRLYLLFMASSIITVICLWNT
Lead Time	Delivery time may differ from different purchasing way or location, please kindly consult your local distributors for specific delivery time.
Research Area	Others
Source	in vitro E.coli expression system
Gene Names	HTR3D
Protein Names	Serotonin receptor 3D
Expression Region	221-454aa
Notes	Repeated freezing and thawing is not recommended. Store working aliquots at 4°C for up to one week.
Tag Info	N-terminal 6xHis-SUMO-tagged
Mol. Weight	41.5kDa
Protein Description	Partial
Image	



(Tris-Glycine gel) Discontinuous SDS-PAGE (reduced) with 5% enrichment gel and 15% separation gel.

Reconstitution

We recommend that this vial be briefly centrifuged prior to opening to bring the contents to the bottom. Please reconstitute protein in deionized sterile water to a concentration of 0.1-1.0 mg/mL. We recommend to add 5-50% of glycerol (final concentration) and aliquot for long-term storage at -20°C/-80°C. Our default final concentration of glycerol is 50%. Customers could use it as reference.