

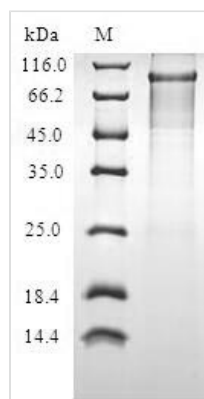


Recombinant Human Progesterone-induced-blocking factor 1 (PIBF1)

Product Code	CSB-CF845171HU
Relevance	<p>Isoform 1: Pericentriolar protein required to maintain mitotic spindle pole integrity. Required for the centrosomal accumulation of PCM1 and the recruitment of centriolar satellite proteins such as BBS4. Via association with PCM1 may be involved in primary cilia formation. Required for CEP63 centrosomal localization and its interaction with WDR62. Together with CEP63 promotes centriole duplication. Promotes the centrosomal localization of CDK2.</p> <p>Isoform 4: The secreted form is a mediator of progesterone that by acting on the phospholipase A2 enzyme interferes with arachidonic acid metabolism, induces a Th2 biased immune response, and by controlling decidual natural killer cells (NK) activity exerts an anti-abortion effect. Increases the production of Th2-type cytokines by signaling via the JAK/STAT pathway. Activates STAT6 and inhibits STAT4 phosphorylation. Signaling via a not identified receptor seems to implicate IL4R and a GPI-anchored protein</p>
Storage	The shelf life is related to many factors, storage state, buffer ingredients, storage temperature and the stability of the protein itself. Generally, the shelf life of liquid form is 6 months at -20°C/-80°C. The shelf life of lyophilized form is 12 months at -20°C/-80°C.
Uniprot No.	Q8WXW3
Product Type	Transmembrane Protein
Immunogen Species	Homo sapiens (Human)
Purity	Greater than 90% as determined by SDS-PAGE.
Sequence	<p>MSRKISKESKKVNISSSLESEDISLETTVPTDDISSSEEREGKVRITRQLIERKEL LHNIQLLKIELSQKTMMIDNLKVDYLTKEELEEKLNDALHQKQLLTRLDNQLAF QQKDASKYQELMKQEMETILLRQKQLEETNLQLREKAGDVRRLRDFELTEE QYIKLKAFPEDQLSIPEYVSVRFYELVNPLRKEICELQVKKNILAEELSTNKNQL KQLTETYEEDRKNYSEVQIRCQRLALELADTKQLIQQGDYRQENYDKVKSERD ALEQEVIELRRKHEILEASHMIQTKERSSELSKEVVTLEQTVTLLQKDKEYLNRQ NMELSVRCAHEEDRLRLQAQLEESKKAREEMYEKYVASRDHYKTEYENKLH DELEQIRLKTNQEIDQLRNASREMYERENRNLREARDNAVAEKERAVMAEKD ALEKHDQLLDRYRELQLSTESKVTEFLHQSKLKSFESESVQLLQEETARNLTQ CQLECEKYQKKLEVLTKEFYSLQASSEKRITELQAQNSEHQARLDIYEKLEKEL DEIMQTAIEIENEDEAERVLFSYGYGANVPTTAKRRLKQSVHLARRVLQLEKQN SLILKDLEHRKDQVTQLSQELDRANSLNQTQQPYRYLIESVRQRDSKIDSLTE SIAQLEKDVSNLNKEKSALLQTKNQMALDLEQLLNHREELAAMKQILVKMHSK HSENSLLLTKEPKHV TENQKSKTLNVPKEHEDNIFT PKPTLFTKKEAPEWSKK QKMKT</p>
Lead Time	Delivery time may differ from different purchasing way or location, please kindly consult your local distributors for specific delivery time.
Research Area	Signal Transduction



Source	in vitro E.coli expression system
Gene Names	PIBF1
Protein Names	Centrosomal protein of 90 kDa
Expression Region	1-757aa
Notes	Repeated freezing and thawing is not recommended. Store working aliquots at 4°C for up to one week.
Tag Info	N-terminal 10xHis-tagged and C-terminal Myc-tagged
Mol. Weight	94.8kDa
Protein Description	Full Length

Image


(Tris-Glycine gel) Discontinuous SDS-PAGE (reduced) with 5% enrichment gel and 15% separation gel.

Reconstitution

We recommend that this vial be briefly centrifuged prior to opening to bring the contents to the bottom. Please reconstitute protein in deionized sterile water to a concentration of 0.1-1.0 mg/mL. We recommend to add 5-50% of glycerol (final concentration) and aliquot for long-term storage at -20°C/-80°C. Our default final concentration of glycerol is 50%. Customers could use it as reference.