



# Rabbit Macrophage Inflammatory Protein-1 $\alpha$ ,MIP-1 $\alpha$ ELISA kit

<b>Product Code</b>	CSB-E04625Rb														
<b>Abbreviation</b>	MIP1 $\alpha$ /CCL3														
<b>Target Name</b>	Macrophage Inflammatory Protein-1 $\alpha$ ,MIP-1 $\alpha$														
<b>Alias</b>	MIP-1 alpha,Macrophage Inflammatory Protein-1 alpha														
<b>Product Type</b>	ELISA Kit														
<b>Immunogen Species</b>	Oryctolagus cuniculus (Rabbit)														
<b>Sample Types</b>	serum, plasma, tissue homogenates														
<b>Detection Range</b>	7.8 pg/mL-500 pg/mL														
<b>Sensitivity</b>	1.95 pg/mL														
<b>Assay Time</b>	1-5h														
<b>Sample Volume</b>	50-100ul														
<b>Detection Wavelength</b>	450 nm														
<b>Lead Time</b>	3-5 working days after you place the order, and it takes another 3-5 days for delivery via DHL or FedEx.														
<b>Research Area</b>	Immunology														
<b>Gene Names</b>	CCL3														
<b>Tag Info</b>	quantitative														
<b>Protein Description</b>	Sandwich														
<b>Product Precision</b>	<p><b>Intra-assay Precision (Precision within an assay): CV%&lt;8%</b> Three samples of known concentration were tested twenty times on one plate to assess.</p> <p><b>Inter-assay Precision (Precision between assays): CV%&lt;10%</b> Three samples of known concentration were tested in twenty assays to assess.</p>														
<b>Linearity</b>	<p>To assess the linearity of the assay, samples were spiked with high concentrations of rabbit MIP-1<math>\alpha</math> in various matrices and diluted with the Sample Diluent to produce samples with values within the dynamic range of the assay.</p> <table> <tr> <td>?</td><td>Sample</td><td>Serum(n=4)</td></tr> <tr> <td rowspan="2">1:1</td><td>Average %</td><td>105</td></tr> <tr> <td>Range %</td><td>93-109</td></tr> <tr> <td rowspan="2">1:2</td><td>Average %</td><td>110</td></tr> <tr> <td>Range %</td><td>97-114</td></tr> </table>		?	Sample	Serum(n=4)	1:1	Average %	105	Range %	93-109	1:2	Average %	110	Range %	97-114
?	Sample	Serum(n=4)													
1:1	Average %	105													
	Range %	93-109													
1:2	Average %	110													
	Range %	97-114													



1:4	Average %	88
	Range %	83-93
1:8	Average %	95
	Range %	85-98

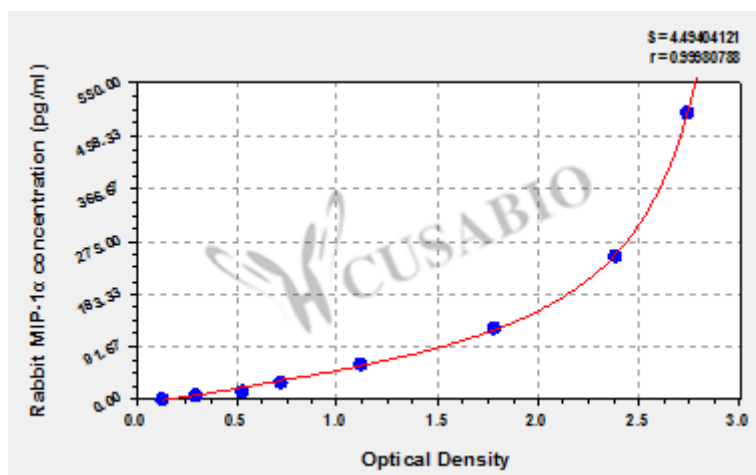
## Recovery

The recovery of rabbit MIP-1 $\alpha$  spiked to levels throughout the range of the assay in various matrices was evaluated. Samples were diluted prior to assay as directed in the Sample Preparation section.

Sample Type	Average % Recovery	Range
Serum (n=5)	105	95-109
EDTA plasma (n=4)	101	91-105

## Typical

These standard curves are provided for demonstration only. A standard curve should be generated for each set of samples assayed.



pg/ml	OD1	OD2	Average	Corrected
500	2.803	2.736	2.770	2.629
250	2.362	2.455	2.409	2.268
125	1.743	1.862	1.803	1.662
62.5	1.123	1.151	1.137	0.996
31.25	0.730	0.744	0.737	0.596
15.6	0.550	0.537	0.544	0.403
7.8	0.306	0.312	0.309	0.168
0	0.139	0.143	0.141	?

## Msds

{"0":{"fileurl":"https://www.cusabio.com/uploadfile/msds/MSDS CSB-E04625Rb.pdf","filename":"MSDS"}}