



Pig tissue inhibitors of metalloproteinase 1, TIMP-1 ELISA Kit

Product Code	CSB-E06799p
Abbreviation	TIMP1
Protein Biological Process 1	Immunity
Target Name	TIMP metalloproteinase inhibitor 1
Uniprot No.	P35624
Alias	RP1-230G1.3, CLGI, EPA, EPO, FLJ90373, HCI, TIMP, erythroid potentiating activity fibroblast collagenase inhibitor tissue inhibitor of metalloproteinase 1
Product Type	ELISA Kit
Immunogen Species	Sus scrofa (Pig)
Protein Biological Process 3	Erythrocyte maturation
Sample Types	serum, plasma, tissue homogenates
Detection Range	7.8 ng/mL-500 ng/mL
Sensitivity	1.95 ng/mL
Assay Time	1-5h
Sample Volume	50-100ul
Detection Wavelength	450 nm
Lead Time	3-5 working days after you place the order, and it takes another 3-5 days for delivery via DHL or FedEx.
Research Area	Cardiovascular
Gene Names	TIMP1
Tag Info	quantitative
Protein Description	Sandwich

Description

This Pig TIMP1 ELISA Kit was designed for the quantitative measurement of Pig TIMP1 protein in serum, plasma, tissue homogenates. It is a Sandwich ELISA kit, its detection range is 7.8 ng/mL-500 ng/mL and the sensitivity is 1.95 ng/mL.

Target Details

This gene belongs to the TIMP gene family. The proteins encoded by this gene family are natural inhibitors of the matrix metalloproteinases (MMPs), a group of peptidases involved in degradation of the extracellular matrix. In addition to its inhibitory role against most of the known MMPs, the encoded protein is able to promote cell proliferation in a wide range of cell types, and may also have an



anti-apoptotic function. Transcription of this gene is highly inducible in response to many cytokines and hormones. In addition, the expression from some but not all inactive X chromosomes suggests that this gene inactivation is polymorphic in human females. This gene is located within intron 6 of the synapsin I gene and is transcribed in the opposite direction.

Product Precision

Intra-assay Precision (Precision within an assay): CV%<8%

Three samples of known concentration were tested twenty times on one plate to assess.

Inter-assay Precision (Precision between assays): CV%<10%

Three samples of known concentration were tested in twenty assays to assess.

Linearity

To assess the linearity of the assay, samples were spiked with high concentrations of pig TIMP-1 in various matrices and diluted with the Sample Diluent to produce samples with values within the dynamic range of the assay.

	Sample	Serum(n=4)
1:1	Average %	93
	Range %	89-101
1:2	Average %	89
	Range %	83-98
1:4	Average %	92
	Range %	86-105
1:8	Average %	94
	Range %	89-107

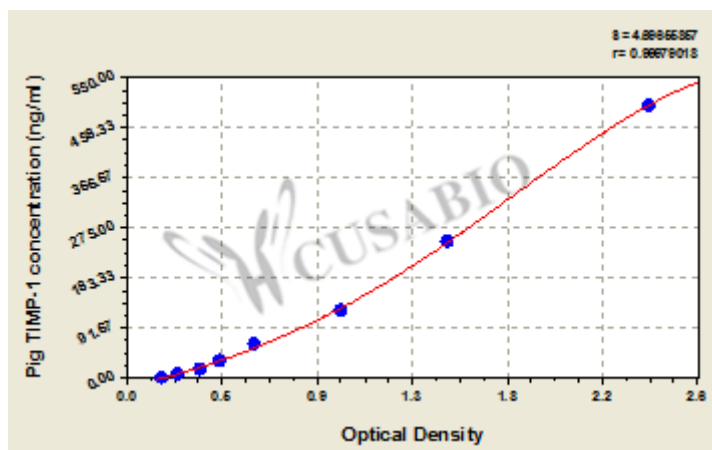
Recovery

The recovery of pig TIMP-1 spiked to levels throughout the range of the assay in various matrices was evaluated. Samples were diluted prior to assay as directed in the Sample Preparation section.

Sample Type	Average % Recovery	Range
Serum (n=5)	94	85-99
EDTA plasma (n=4)	97	92-100

Typical

These standard curves are provided for demonstration only. A standard curve should be generated for each set of samples assayed.



ng/ml	OD1	OD2	Average	Corrected
500	2.422	2.395	2.409	2.236
250	1.466	1.506	1.486	1.313
125	0.986	1.007	0.997	0.824
62.5	0.611	0.589	0.600	0.427
31.2	0.425	0.454	0.440	0.267
15.6	0.342	0.362	0.352	0.179
7.8	0.242	0.250	0.246	0.073
0	0.175	0.170	0.173	

Msds

```
{
  "0": {
    "fileurl": "https://www.cusabio.com/uploadfile/msds/MSDS CSB-E06799p.pdf",
    "filename": "MSDS"
  }
}
```