



Rat Parathyroid hormone, PTH ELISA Kit

Product Code	CSB-E07866r
Abbreviation	PTH
Target Name	parathyroid hormone
Uniprot No.	P04089
Alias	PTH1, parathormone parathyrin parathyroid hormone 1
Product Type	ELISA Kit
Immunogen Species	Rattus norvegicus (Rat)
Sample Types	serum, plasma, tissue homogenates
Detection Range	6.25 pg/mL-400 pg/mL
Sensitivity	1.56 pg/mL
Assay Time	1-5h
Sample Volume	50-100ul
Detection Wavelength	450 nm
Lead Time	3-5 working days after you place the order, and it takes another 3-5 days for delivery via DHL or FedEx.
Research Area	Signal Transduction
Gene Names	Pth
Tag Info	quantitative
Protein Description	Sandwich
Description	This Rat PTH ELISA Kit was designed for the quantitative measurement of Rat PTH protein in serum, plasma, tissue homogenates. It is a Sandwich ELISA kit, its detection range is 6.25 pg/mL-400 pg/mL and the sensitivity is 1.56 pg/mL .
Target Details	This protein is a hormone secreted by parathyroid cells. This hormone elevates blood Ca ²⁺ level by dissolving the salts in bone and preventing their renal excretion. Defects in this gene are a cause of familial isolated hypoparathyroidism (FIH).
Product Precision	Intra-assay Precision (Precision within an assay): CV%<8% Three samples of known concentration were tested twenty times on one plate to assess. Inter-assay Precision (Precision between assays): CV%<10% Three samples of known concentration were tested in twenty assays to assess.
Linearity	



To assess the linearity of the assay, samples were spiked with high concentrations of rat PTH in various matrices and diluted with the Sample Diluent to produce samples with values within the dynamic range of the assay.

?	Sample	Serum(n=4)
1:5	Average %	97
	Range %	91-103
1:10	Average %	99
	Range %	95-107
1:20	Average %	95
	Range %	90-99
1:40	Average %	87
	Range %	81-92

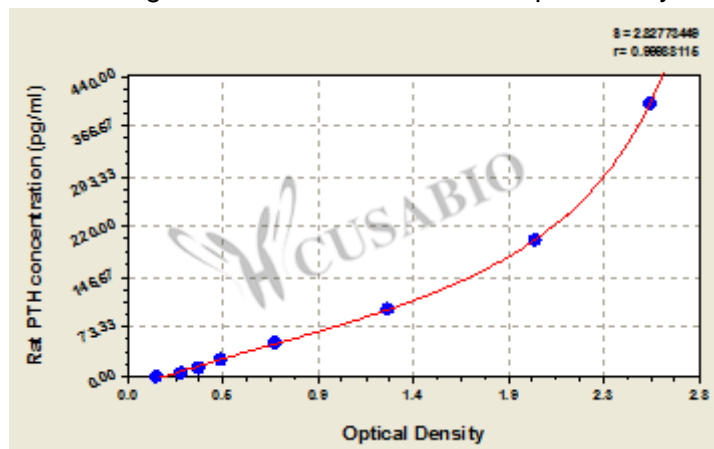
Recovery

The recovery of rat PTH spiked to levels throughout the range of the assay in various matrices was evaluated. Samples were diluted prior to assay as directed in the Sample Preparation section.

Sample Type	Average % Recovery	Range
Serum (n=5)	93	89-97
EDTA plasma (n=4)	106	102-109

Typical

These standard curves are provided for demonstration only. A standard curve should be generated for each set of samples assayed.



pg/ml	OD1	OD2	Average	Corrected
400	2.613	2.511	2.562	2.408
200	2.054	1.953	2.004	1.850
100	1.276	1.287	1.282	1.128
50	0.727	0.738	0.733	0.579
25	0.457	0.468	0.463	0.309
12.5	0.361	0.350	0.356	0.202
6.25	0.275	0.269	0.272	0.118
0	0.154	0.153	0.154	?

Msds

{"0":{"fileurl":"https://www.cusabio.com/uploadfile/msds/MSDS CSB-E07866r.pdf","filename":"MSDS"}}