



Rat Myoglobin, MYO/MB ELISA Kit

Product Code	CSB-E08049r
Protein Biological Process 2	Anion transport
Abbreviation	MB
Protein Biological Process 1	Transport
Target Name	myoglobin
Uniprot No.	Q9QZ76
Alias	MGC13548, PVALB, OTTHUMP00000197922
Product Type	ELISA Kit
Immunogen Species	Rattus norvegicus (Rat)
Protein Biological Process 3	Oxygen transport
Sample Types	serum, plasma, tissue homogenates
Detection Range	15.6 ng/mL-1000 ng/mL
Sensitivity	3.9 ng/mL
Assay Time	1-5h
Sample Volume	50-100ul
Detection Wavelength	450 nm
Lead Time	3-5 working days after you place the order, and it takes another 3-5 days for delivery via DHL or FedEx.
Research Area	Metabolism
Gene Names	Mb
Tag Info	quantitative
Protein Description	Sandwich

Description

This Rat Myoglobin(MB) ELISA Kit was designed for the quantitative measurement of Rat Myoglobin(MB) protein in serum, plasma, tissue homogenates. It is a Sandwich ELISA kit, its detection range is 15.6 ng/mL-1000 ng/mL and the sensitivity is 3.9 ng/mL .

Target Details

This gene encodes a member of the globin superfamily and is expressed in skeletal and cardiac muscles. The encoded protein is a haemoprotein contributing to intracellular oxygen storage and transcellular facilitated diffusion of oxygen. At least three alternatively spliced transcript variants encoding the same protein have been reported.


Product Precision

Intra-assay Precision (Precision within an assay): CV%<8%

Three samples of known concentration were tested twenty times on one plate to assess.

Inter-assay Precision (Precision between assays): CV%<10%

Three samples of known concentration were tested in twenty assays to assess.

Linearity

To assess the linearity of the assay, samples were spiked with high concentrations of rat MYO in various matrices and diluted with the Sample Diluent to produce samples with values within the dynamic range of the assay.

?	Sample	Serum(n=4)
1:1	Average %	94
	Range %	90-100
1:2	Average %	92
	Range %	87-100
1:4	Average %	97
	Range %	90-105
1:8	Average %	87
	Range %	83-96

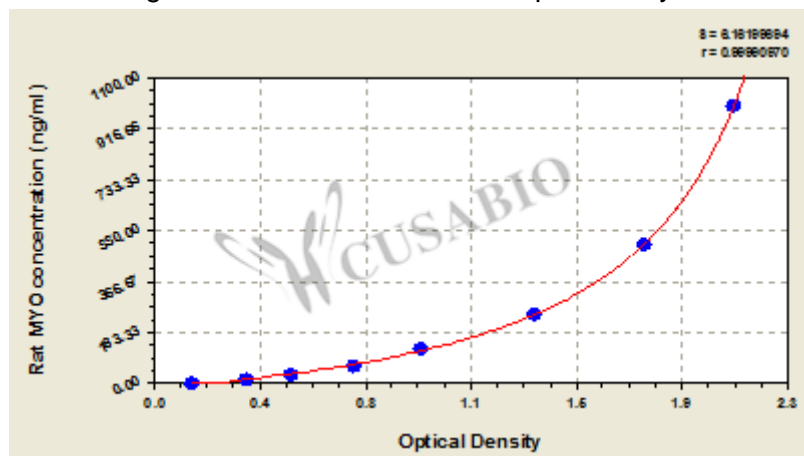
Recovery

The recovery of rat MYO spiked to levels throughout the range of the assay in various matrices was evaluated. Samples were diluted prior to assay as directed in the Sample Preparation section.

Sample Type	Average % Recovery	Range
Serum (n=5)	96	88-99
EDTA plasma (n=4)	95	91-99

Typical

These standard curves are provided for demonstration only. A standard curve should be generated for each set of samples assayed.



ng/ml	OD1	OD2	Average Corrected	
1000	2.064	2.069	2.067	1.922
500	1.743	1.754	1.749	1.604
250	1.355	1.363	1.359	1.214
125	0.954	0.962	0.958	0.813
62.5	0.718	0.728	0.723	0.578
31.25	0.498	0.502	0.500	0.355
15.6	0.337	0.343	0.340	0.195
0	0.143	0.146	0.145	?

**Msd**

```
{"0":{"fileurl":"https://www.cusabio.com/uploadfile/msds/MSDS CSB-E08049r.pdf","filename":"MSDS"}}
```