



Pig soluble P-selectin,sP-Selectin ELISA Kit

Product Code	CSB-E08106p
Abbreviation	sP-Selectin
Target Name	soluble P-selectin,sP-Selectin
Product Type	ELISA Kit
Immunogen Species	Sus scrofa (Pig)
Sample Types	serum, plasma, cell culture supernates, tissue homogenates
Detection Range	12.5 ng/mL-800 ng/mL
Sensitivity	3.12 ng/mL
Assay Time	1-5h
Sample Volume	50-100ul
Detection Wavelength	450 nm
Lead Time	3-5 working days after you place the order, and it takes another 3-5 days for delivery via DHL or FedEx.
Research Area	Others
Tag Info	quantitative
Protein Description	Sandwich

Description

This Pig sP-Selectin ELISA Kit was designed for the quantitative measurement of Pig sP-Selectin protein in serum, plasma, cell culture supernates, tissue homogenates. It is a Sandwich ELISA kit, its detection range is 12.5 ng/mL-800 ng/mL and the sensitivity is 3.12 ng/mL.

Product Precision

Intra-assay Precision (Precision within an assay): CV%<8%
 Three samples of known concentration were tested twenty times on one plate to assess.

Inter-assay Precision (Precision between assays): CV%<10%
 Three samples of known concentration were tested in twenty assays to assess.

Linearity

To assess the linearity of the assay, samples were spiked with high concentrations of pig sP-Selectin in various matrices and diluted with the Sample Diluent to produce samples with values within the dynamic range of the assay.

	Sample	Serum(n=4)
1:1	Average %	89
	Range %	85-94
1:2	Average %	95
	Range %	92-98
1:4	Average %	87
	Range %	82-90



1:8	Average %	93
	Range %	90-96

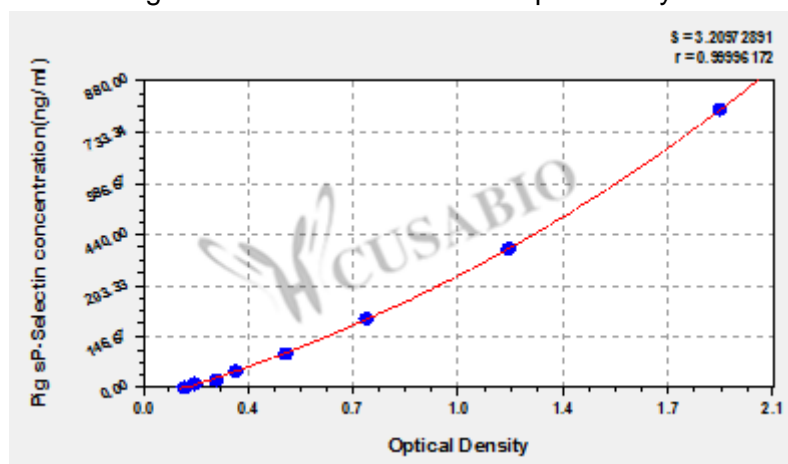
Recovery

The recovery of pig sP-Selectin spiked to levels throughout the range of the assay in various matrices was evaluated. Samples were diluted prior to assay as directed in the Sample Preparation section.

Sample Type	Average % Recovery	Range
Serum (n=5)	87	83-90
EDTA plasma (n=4)	85	82-89

Typical

These standard curves are provided for demonstration only. A standard curve should be generated for each set of samples assayed.



ng/ml	OD1	OD2	Average	Corrected
800	1.828	1.968	1.898	1.750
400	1.179	1.236	1.208	1.060
200	0.734	0.757	0.746	0.598
100	0.485	0.476	0.481	0.333
50	0.311	0.323	0.317	0.169
25	0.251	0.257	0.254	0.106
12.5	0.188	0.182	0.185	0.037
0	0.145	0.151	0.148	

Msds

{"0":{"fileurl":"https://www.cusabio.com/uploadfile/msds/MSDS CSB-E08106p.pdf","filename":"MSDS"}}