



Rat plasmin-antiplasmin complex,PAP ELISA Kit

Product Code	CSB-E08435r
Abbreviation	PAP
Protein Biological Process 1	N/A
Target Name	plasmin-antiplasmin complex,PAP
Alias	N/A
Product Type	ELISA Kit
Immunogen Species	Rattus norvegicus (Rat)
Sample Types	serum, tissue homogenates
Detection Range	7.8 ng/mL-500 ng/mL
Sensitivity	1.95 ng/mL
Assay Time	1-5h
Sample Volume	50-100ul
Detection Wavelength	450 nm
Lead Time	3-5 working days after you place the order, and it takes another 3-5 days for delivery via DHL or FedEx.
Research Area	Others
Tag Info	quantitative
Protein Description	Sandwich

Description

This Rat PAP ELISA Kit was designed for the quantitative measurement of Rat PAP protein in serum, tissue homogenates. It is a Sandwich ELISA kit, its detection range is 7.8 ng/mL-500 ng/mL and the sensitivity is 1.95 ng/mL.

Product Precision

Intra-assay Precision (Precision within an assay): CV%<8%
 Three samples of known concentration were tested twenty times on one plate to assess.

Inter-assay Precision (Precision between assays): CV%<10%
 Three samples of known concentration were tested in twenty assays to assess.

Linearity

To assess the linearity of the assay, samples were spiked with high concentrations of rat PAP in various matrices and diluted with the Sample Diluent to produce samples with values within the dynamic range of the assay.

?	Sample	Serum(n=4)
1:1	Average %	97
	Range %	90-103



1:2	Average %	98
	Range %	91-105
1:4	Average %	99
	Range %	94-106
1:8	Average %	105
	Range %	100-110

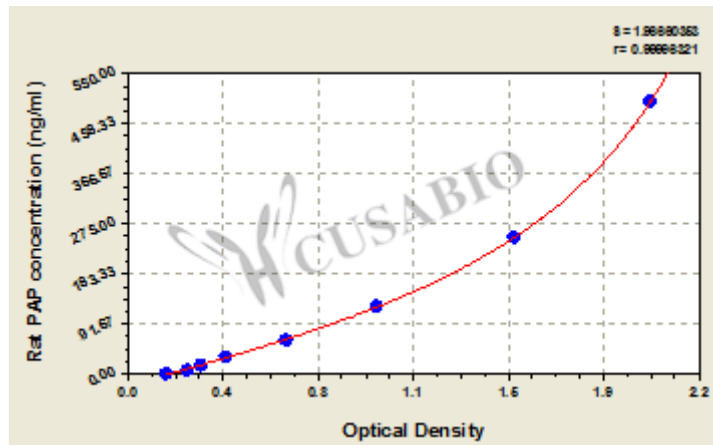
Recovery

The recovery of rat PAP spiked to levels throughout the range of the assay in various matrices was evaluated. Samples were diluted prior to assay as directed in the Sample Preparation section.

Sample Type	Average % Recovery	Range
Serum (n=5)	99	94-106

Typical

These standard curves are provided for demonstration only. A standard curve should be generated for each set of samples assayed.



ng/ml	OD1	OD2	Average	Corrected
500	1.997	2.097	2.047	1.886
250	1.468	1.568	1.518	1.357
125	0.957	1.007	0.982	0.821
62.5	0.627	0.637	0.632	0.471
31.2	0.390	0.400	0.395	0.234
15.6	0.291	0.301	0.296	0.135
7.8	0.242	0.247	0.245	0.084
0	0.160	0.162	0.161	?

Msds

{"0":{"fileurl":"https://www.cusabio.com/uploadfile/msds/MSDS CSB-E08435r.pdf","filename":"MSDS"}}