



# Rat Caspase-9,Casp-9 ELISA Kit

<b>Product Code</b>	CSB-E08863r																						
<b>Abbreviation</b>	Casp-9																						
<b>Target Name</b>	Caspase-9,Casp-9																						
<b>Uniprot No.</b>	Q9JHK1																						
<b>Product Type</b>	ELISA Kit																						
<b>Immunogen Species</b>	Rattus norvegicus (Rat)																						
<b>Sample Types</b>	serum, plasma, tissue homogenates																						
<b>Detection Range</b>	62.5 pg/mL-4000 pg/mL																						
<b>Sensitivity</b>	15.6 pg/mL																						
<b>Assay Time</b>	1-5h																						
<b>Sample Volume</b>	50-100ul																						
<b>Detection Wavelength</b>	450 nm																						
<b>Lead Time</b>	3-5 working days after you place the order, and it takes another 3-5 days for delivery via DHL or FedEx.																						
<b>Research Area</b>	Cell Biology																						
<b>Tag Info</b>	quantitative																						
<b>Protein Description</b>	Sandwich																						
<b>Description</b>	This Rat Casp-9 ELISA Kit was designed for the quantitative measurement of Rat Casp-9 protein in serum, plasma, tissue homogenates. It is a Sandwich ELISA kit, its detection range is 62.5 pg/mL-4000 pg/mL and the sensitivity is 15.6 pg/mL.																						
<b>Product Precision</b>	<p>Intra-assay Precision (Precision within an assay): CV%&lt;8%</p> <p>Three samples of known concentration were tested twenty times on one plate to assess.</p> <p>Inter-assay Precision (Precision between assays): CV%&lt;10%</p> <p>Three samples of known concentration were tested in twenty assays to assess.</p>																						
<b>Linearity</b>	<p>To assess the linearity of the assay, samples were spiked with high concentrations of rat Casp-9 in various matrices and diluted with the Sample Diluent to produce samples with values within the dynamic range of the assay.</p> <table> <tr> <td>?</td><td>Sample</td><td>Serum(n=4)</td></tr> <tr> <td>1:1</td><td>Average %</td><td>96</td></tr> <tr> <td></td><td>Range %</td><td>90-99</td></tr> <tr> <td>1:2</td><td>Average %</td><td>95</td></tr> <tr> <td></td><td>Range %</td><td>91-102</td></tr> <tr> <td>1:4</td><td>Average %</td><td>98</td></tr> <tr> <td></td><td>Range %</td><td>94-103</td></tr> </table>		?	Sample	Serum(n=4)	1:1	Average %	96		Range %	90-99	1:2	Average %	95		Range %	91-102	1:4	Average %	98		Range %	94-103
?	Sample	Serum(n=4)																					
1:1	Average %	96																					
	Range %	90-99																					
1:2	Average %	95																					
	Range %	91-102																					
1:4	Average %	98																					
	Range %	94-103																					



1:8	Average %	102
	Range %	96-106

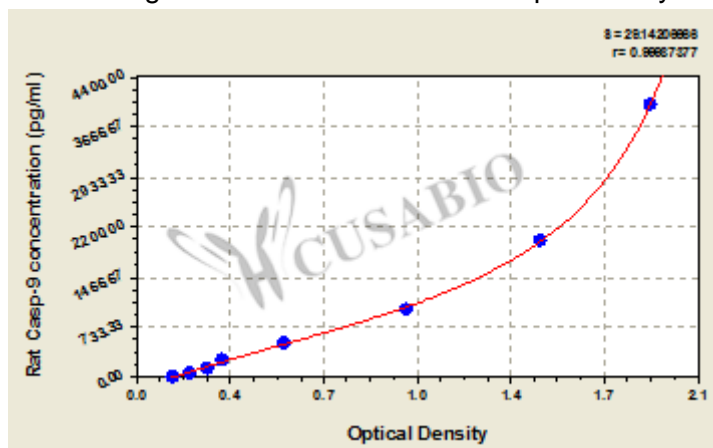
## Recovery

The recovery of rat Casp-9 spiked to levels throughout the range of the assay in various matrices was evaluated. Samples were diluted prior to assay as directed in the Sample Preparation section.

Sample Type	Average % Recovery	Range
Serum (n=5)	94	89-98
EDTA plasma (n=4)	100	96-104

## Typical

These standard curves are provided for demonstration only. A standard curve should be generated for each set of samples assayed.



pg/ml	OD1	OD2	Average	Corrected
4000	1.846	1.946	1.896	1.752
2000	1.442	1.542	1.492	1.348
1000	0.986	1.016	1.001	0.857
500	0.546	0.556	0.551	0.407
250	0.320	0.330	0.325	0.181
125	0.266	0.278	0.272	0.128
62.5	0.204	0.207	0.206	0.062
0	0.143	0.144	0.144	?

## Msds

{"0":{"fileurl":"https://www.cusabio.com/uploadfile/msds/MSDS CSB-E08863r.pdf","filename":"MSDS"}}