



Human Pregnancy Specific β 1 Glycoprotein (SP1/PS β 1-G) ELISA kit

Product Code	CSB-E09133h
Abbreviation	SP1/PS β 1-G
Target Name	Pregnancy Specific β 1 Glycoprotein (SP1/PS β 1-G)
Uniprot No.	P11464
Alias	B1G1, CD66f, DHFRP2, FLJ90598, FLJ90654, PBG1, PSBG1, PSGGA, PSGIIA, SP1, pregnancy-specific B-1 glycoprotein
Product Type	ELISA Kit
Immunogen Species	Homo sapiens (Human)
Sample Types	serum, plasma, tissue homogenates
Detection Range	1.0 μ g/mL-400 μ g/mL
Sensitivity	1.0 μ g/mL
Assay Time	1-5h
Sample Volume	50-100ul
Detection Wavelength	450 nm
Lead Time	3-5 working days after you place the order, and it takes another 3-5 days for delivery via DHL or FedEx.
Research Area	Tags & Cell Markers
Gene Names	PSG1
Tag Info	quantitative
Protein Description	Competitive
Description	<p>This Human SP1/PSβ1-G ELISA Kit was designed for the quantitative measurement of Human SP1/PSβ1-G protein in serum, plasma, tissue homogenates. It is a Competitive ELISA kit, its detection range is 1.0 μg/mL-400 μg/mL and the sensitivity is 1.0 μg/mL.</p>
Product Precision	<p>Intra-assay Precision (Precision within an assay): CV%<15% Three samples of known concentration were tested twenty times on one plate to assess.</p> <p>Inter-assay Precision (Precision between assays): CV%<15% Three samples of known concentration were tested in twenty assays to assess.</p>

Linearity



To assess the linearity of the assay, samples were spiked with high concentrations of human SP1 in various matrices and diluted with the Sample Diluent to produce samples with values within the dynamic range of the assay.

	Sample	Serum(n=4)
1:1	Average %	96
	Range %	89-106
1:2	Average %	90
	Range %	89-104
1:4	Average %	95
	Range %	88-100
1:8	Average %	87
	Range %	82-99

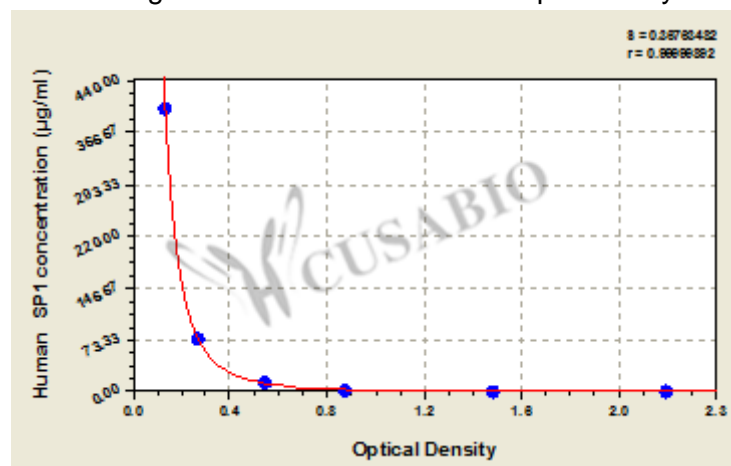
Recovery

The recovery of human SP1 spiked to levels throughout the range of the assay in various matrices was evaluated. Samples were diluted prior to assay as directed in the Sample Preparation section.

Sample Type	Average % Recovery	Range
Serum (n=5)	95	86-107
EDTA plasma (n=4)	97	91-100

Typical

These standard curves are provided for demonstration only. A standard curve should be generated for each set of samples assayed.



µg/ml	OD1	OD2	Average
400	0.139	0.144	0.142
75	0.269	0.278	0.274
12.5	0.534	0.556	0.545
3.5	0.853	0.873	0.863
1	1.452	1.464	1.458
0	2.137	2.161	2.149