



Pig Myeloperoxidase (MPO) ELISA kit

Product Code	CSB-E09397p
Abbreviation	MPO
Target Name	myeloperoxidase,MPO
Uniprot No.	K7GRV6
Product Type	ELISA Kit
Immunogen Species	Sus scrofa (Pig)
Sample Types	serum, plasma, tissue homogenates
Detection Range	15.6 ng/mL-1000 ng/mL
Sensitivity	3.9 ng/mL
Assay Time	1-5h
Sample Volume	50-100ul
Detection Wavelength	450 nm
Lead Time	3-5 working days after you place the order, and it takes another 3-5 days for delivery via DHL or FedEx.
Research Area	Immunology
Gene Names	MPO
Tag Info	quantitative
Protein Description	Sandwich

Description

This Pig MPO ELISA Kit was designed for the quantitative measurement of Pig MPO protein in serum, plasma, tissue homogenates. It is a Sandwich ELISA kit, its detection range is 15.6 ng/mL-1000 ng/mL and the sensitivity is 3.9 ng/mL .

Product Precision

Intra-assay Precision (Precision within an assay): CV%<8%
 Three samples of known concentration were tested twenty times on one plate to assess.

Inter-assay Precision (Precision between assays): CV%<10%
 Three samples of known concentration were tested in twenty assays to assess.

Linearity

To assess the linearity of the assay, samples were spiked with high concentrations of pig MPO in various matrices and diluted with the Sample Diluent to produce samples with values within the dynamic range of the assay.

?	Sample	Serum(n=4)
1:5	Average %	91
	Range %	87-99
1:10	Average %	97
	Range %	93-105



1:20	Average %	85
	Range %	82-89
1:40	Average %	90
	Range %	85-98

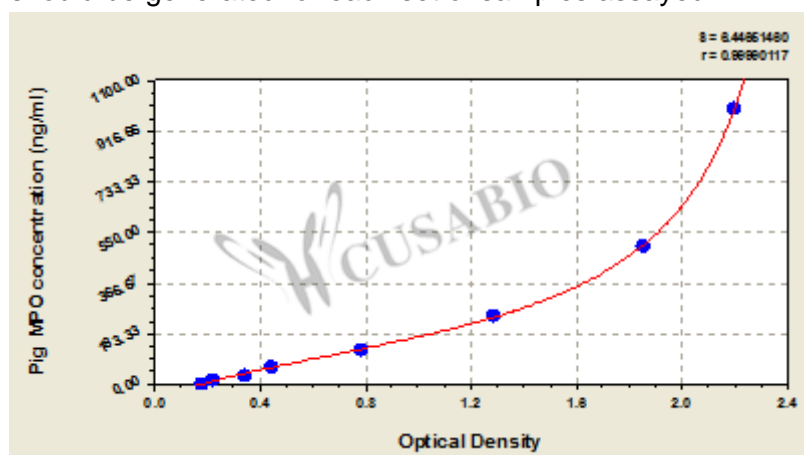
Recovery

The recovery of pig MPO spiked to levels throughout the range of the assay in various matrices was evaluated. Samples were diluted prior to assay as directed in the Sample Preparation section.

Sample Type	Average % Recovery	Range
Serum (n=5)	90	85-95
EDTA plasma (n=4)	95	89-99

Typical

These standard curves are provided for demonstration only. A standard curve should be generated for each set of samples assayed.



ng/ml	OD1	OD2	Average	Corrected
1000	2.276	2.154	2.215	2.019
500	1.863	1.872	1.868	1.672
250	1.297	1.307	1.302	1.106
125	0.791	0.811	0.801	0.605
62.5	0.452	0.469	0.461	0.265
31.25	0.356	0.364	0.360	0.164
15.6	0.242	0.232	0.237	0.041
0	0.195	0.197	0.196	?

Msds

{"0":{"fileurl":"https://www.cusabio.com/uploadfile/msds/MSDS CSB-E09397p.pdf","filename":"MSDS"}}}