



Human Pulmonary surfactant-associated protein B,SP-B ELISA Kit

Product Code	CSB-E10134h
Abbreviation	SFTPB
Protein Biological Process 1	Transport
Target Name	surfactant protein B
Uniprot No.	P07988
Alias	PSP-B, SFTB3, SFTP3, SMDP1, SP-B, OTTHUMP00000203253 Pulmonary surfactant-associated protein B, 18kD surfactant, pulmonary-associated protein B
Product Type	ELISA Kit
Immunogen Species	Homo sapiens (Human)
Protein Biological Process 3	Gaseous exchange
Sample Types	serum, plasma, urine, cell culture supernates
Detection Range	0.156 ng/mL-10 ng/mL
Sensitivity	0.039 ng/mL
Assay Time	1-5h
Sample Volume	50-100ul
Detection Wavelength	450 nm
Lead Time	3-5 working days after you place the order, and it takes another 3-5 days for delivery via DHL or FedEx.
Research Area	Signal Transduction
Gene Names	SFTPB
Tag Info	quantitative
Protein Description	Sandwich
Description	This Human SFTPB ELISA Kit was designed for the quantitative measurement of Human SFTPB protein in serum, plasma, urine, cell culture supernates. It is a Sandwich ELISA kit, its detection range is 0.156 ng/mL-10 ng/mL and the sensitivity is 0.039 ng/mL.
Product Precision	Intra-assay Precision (Precision within an assay): CV%<8% Three samples of known concentration were tested twenty times on one plate to assess.



Inter-assay Precision (Precision between assays): CV%<10%

Three samples of known concentration were tested in twenty assays to assess.

Linearity

To assess the linearity of the assay, samples were spiked with high concentrations of human SP-B in various matrices and diluted with the Sample Diluent to produce samples with values within the dynamic range of the assay.

?	Sample	Serum(n=4)
1:100	Average %	89
	Range %	83-95
1:200	Average %	93
	Range %	87-100
1:400	Average %	88
	Range %	85-91
1:800	Average %	93
	Range %	86-98

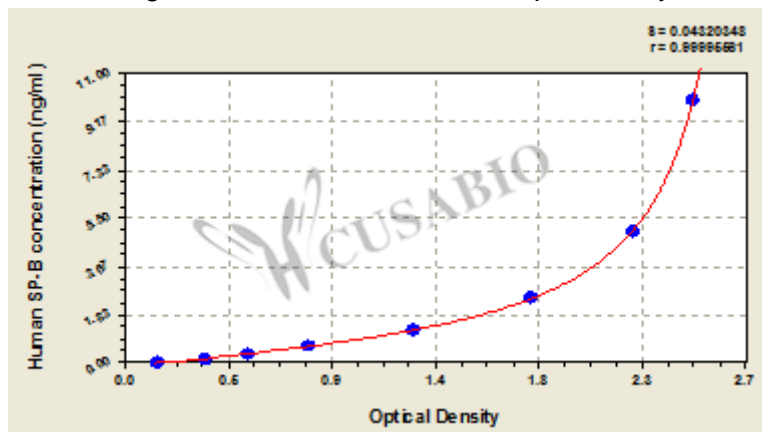
Recovery

The recovery of human SP-B spiked to levels throughout the range of the assay in various matrices was evaluated. Samples were diluted prior to assay as directed in the Sample Preparation section.

Sample Type	Average % Recovery	Range
Serum (n=5)	94	90-99
EDTA plasma (n=4)	96	89-100

Typical

These standard curves are provided for demonstration only. A standard curve should be generated for each set of samples assayed.



ng/ml	OD1	OD2	Average	Corrected
10	2.453	2.563	2.508	2.347
5	2.228	2.261	2.245	2.084
2.5	1.795	1.801	1.798	1.637
1.25	1.267	1.297	1.282	1.121
0.625	0.811	0.834	0.823	0.662
0.312	0.532	0.575	0.554	0.393
0.156	0.362	0.371	0.367	0.206
0	0.160	0.162	0.161	?

Msds

{"0":{"fileurl":"https://www.cusabio.com/uploadfile/msds/MSDS CSB-E10134h.pdf","filename":"MSDS"}}