



Human Thymosin β 4 ELISA Kit

Product Code	CSB-E11910h
Abbreviation	TMSB4X
Target Name	thymosin beta 4, X-linked
Uniprot No.	P62328
Alias	FX, PTMB4, TB4X, TMSB4, OTTHUMP00000022925 OTTHUMP00000022927 OTTHUMP00000022928 pro thymosin beta-4 thymosin beta-4 thymosin, beta 4 thymosin, beta 4, X chromosome
Product Type	ELISA Kit
Immunogen Species	Homo sapiens (Human)
Sample Types	serum, plasma, tissue homogenates
Detection Range	78 ng/mL-5000 ng/mL
Sensitivity	19.5 ng/mL
Assay Time	1-5h
Sample Volume	50-100ul
Detection Wavelength	450 nm
Lead Time	3-5 working days after you place the order, and it takes another 3-5 days for delivery via DHL or FedEx.
Research Area	Signal Transduction
Gene Names	TMSB4X
Tag Info	quantitative
Protein Description	Sandwich
Description	This Human TMSB4X ELISA Kit was designed for the quantitative measurement of Human TMSB4X protein in serum, plasma, tissue homogenates. It is a Sandwich ELISA kit, its detection range is 78 ng/mL-5000 ng/mL and the sensitivity is 19.5 ng/mL .
Target Details	This gene encodes an actin sequestering protein which plays a role in regulation of actin polymerization. The protein is also involved in cell proliferation, migration, and differentiation. This gene escapes X inactivation and has a homolog on chromosome Y.
Product Precision	Intra-assay Precision (Precision within an assay): CV%<8% Three samples of known concentration were tested twenty times on one plate to assess. Inter-assay Precision (Precision between assays): CV%<10%



Three samples of known concentration were tested in twenty assays to assess.

Linearity

To assess the linearity of the assay, samples were spiked with high concentrations of human thymosin β 4 in various matrices and diluted with the Sample Diluent to produce samples with values within the dynamic range of the assay.

?	Sample	Serum(n=4)
	Average %	88
1:1	Range %	84-96
	Average %	98
1:2	Range %	92-105
	Average %	94
1:4	Range %	90-102
	Average %	97
1:8	Range %	92-106

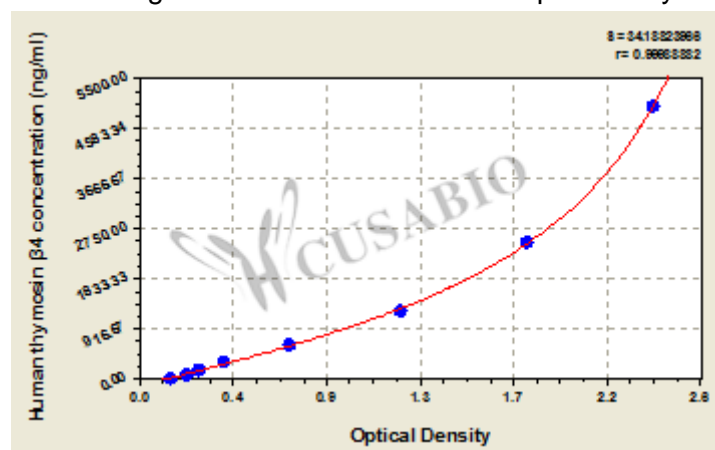
Recovery

The recovery of human thymosin β 4 spiked to levels throughout the range of the assay in various matrices was evaluated. Samples were diluted prior to assay as directed in the Sample Preparation section.

Sample Type	Average % Recovery	Range
Serum (n=5)	89	82-94
EDTA plasma (n=4)	102	96-108

Typical

These standard curves are provided for demonstration only. A standard curve should be generated for each set of samples assayed.



ng/ml	OD1	OD2	Average	Corrected
5000	2.411	2.312	2.362	2.206
2500	1.835	1.736	1.786	1.630
1250	1.212	1.203	1.208	1.052
625	0.703	0.694	0.699	0.543
312	0.394	0.404	0.399	0.243
156	0.277	0.286	0.282	0.126
78	0.223	0.228	0.226	0.070
0	0.155	0.156	0.156	?

Msds

{"0":{"fileurl":"https://www.cusabio.com/uploadfile/msds/MSDS CSB-E11910h.pdf","filename":"MSDS"}}}