



Rat Pulmonary Surfactant-associated protein C (SP-C) ELISA kit

Product Code	CSB-E12631r
Abbreviation	SFTPC
Protein Biological Process 1	Transport
Target Name	surfactant protein C
Uniprot No.	P11685
Alias	PSP-C, SFTP2, SMDP2, SP-C, pulmonary surfactant apoprotein-2 SP-C surfactant, pulmonary-associated protein C
Product Type	ELISA Kit
Immunogen Species	Rattus norvegicus (Rat)
Protein Biological Process 3	Gaseous exchange
Sample Types	serum, plasma, tissue homogenates
Detection Range	4.69 pg/mL-300 pg/mL
Sensitivity	1.17 pg/mL
Assay Time	1-5h
Sample Volume	50-100ul
Detection Wavelength	450 nm
Lead Time	3-5 working days after you place the order, and it takes another 3-5 days for delivery via DHL or FedEx.
Research Area	Signal Transduction
Gene Names	Sftpc
Tag Info	quantitative
Protein Description	Sandwich

Description

This Rat SFTPC ELISA Kit was designed for the quantitative measurement of Rat SFTPC protein in serum, plasma, tissue homogenates. It is a Sandwich ELISA kit, its detection range is 4.69 pg/mL-300 pg/mL and the sensitivity is 1.17 pg/mL.

Product Precision

Intra-assay Precision (Precision within an assay): CV%<8%
 Three samples of known concentration were tested twenty times on one plate to assess.

Inter-assay Precision (Precision between assays): CV%<10%



Three samples of known concentration were tested in twenty assays to assess.

Linearity

To assess the linearity of the assay, samples were spiked with high concentrations of rat SP-C in various matrices and diluted with the Sample Diluent to produce samples with values within the dynamic range of the assay.

?	Sample	Serum(n=4)
1:1000	Average %	85
	Range %	80-90
1:2000	Average %	104
	Range %	100-109
1:4000	Average %	91
	Range %	85-96
1:8000	Average %	96
	Range %	91-103

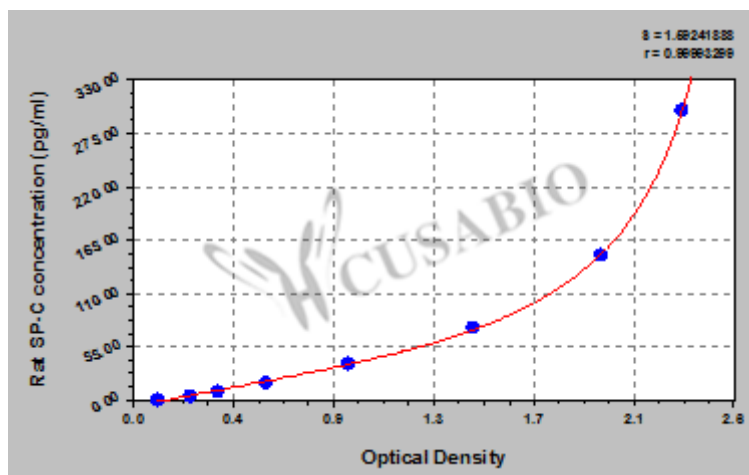
Recovery

The recovery of rat SP-C spiked to levels throughout the range of the assay in various matrices was evaluated. Samples were diluted prior to assay as directed in the Sample Preparation section.

Sample Type	Average % Recovery	Range
Serum (n=5)	98	94-102
EDTA plasma (n=4)	87	83-91

Typical

These standard curves are provided for demonstration only. A standard curve should be generated for each set of samples assayed.



pg/ml	OD1	OD2	Average	Corrected
300	2.402	2.274	2.338	2.227
150	1.939	2.051	1.995	1.884
75	1.411	1.497	1.454	1.343
37.5	0.939	0.904	0.922	0.811
18.75	0.568	0.579	0.574	0.463
9.38	0.355	0.382	0.369	0.258
4.69	0.248	0.260	0.254	0.143
0	0.114	0.108	0.111	?

Msds

```
{
  "0": {
    "fileurl": "https://www.cusabio.com/uploadfile/msds/MSDS CSB-E12631r.pdf",
    "filename": "MSDS"
  }
}
```