



Rat microtubule-associated protein 2,MAP-2

ELISA Kit

Product Code	CSB-E12806r
Abbreviation	MAP2
Target Name	microtubule-associated protein 2
Uniprot No.	P15146
Alias	DKFZp686I2148, MAP2A, MAP2B, MAP2C, OTTHUMP00000163916
Product Type	ELISA Kit
Immunogen Species	Rattus norvegicus (Rat)
Sample Types	serum, plasma, tissue homogenates, cell lysates
Detection Range	0.156 ng/mL-10 ng/mL
Sensitivity	0.039 ng/mL
Assay Time	1-5h
Sample Volume	50-100ul
Detection Wavelength	450 nm
Lead Time	3-5 working days after you place the order, and it takes another 3-5 days for delivery via DHL or FedEx.
Research Area	Signal Transduction
Gene Names	Map2
Tag Info	quantitative
Protein Description	Sandwich
Description	This Rat MAP2 ELISA Kit was designed for the quantitative measurement of Rat MAP2 protein in serum, plasma, tissue homogenates, cell lysates. It is a Sandwich ELISA kit, its detection range is 0.156 ng/mL-10 ng/mL and the sensitivity is 0.039 ng/mL .
Target Details	This gene encodes a protein that belongs to the microtubule-associated protein family. The proteins of this family are thought to be involved in microtubule assembly, which is an essential step in neurogenesis. The products of similar genes in rat and mouse are neuron-specific cytoskeletal proteins that are enriched in dendrites, implicating a role in determining and stabilizing dendritic shape during neuron development. A number of alternatively spliced variants encoding distinct isoforms have been described.
Product Precision	Intra-assay Precision (Precision within an assay): CV%<8% Three samples of known concentration were tested twenty times on one plate to assess.



Inter-assay Precision (Precision between assays): CV%<10%

Three samples of known concentration were tested in twenty assays to assess.

Linearity

To assess the linearity of the assay, samples were spiked with high concentrations of rat MAP-2 in various matrices and diluted with the Sample Diluent to produce samples with values within the dynamic range of the assay.

?	Sample	Serum(n=4)
	Average %	90
1:1	Range %	86-93
	Average %	103
1:2	Range %	98-105
	Average %	93
1:4	Range %	88-97
	Average %	97
1:8	Range %	91-101

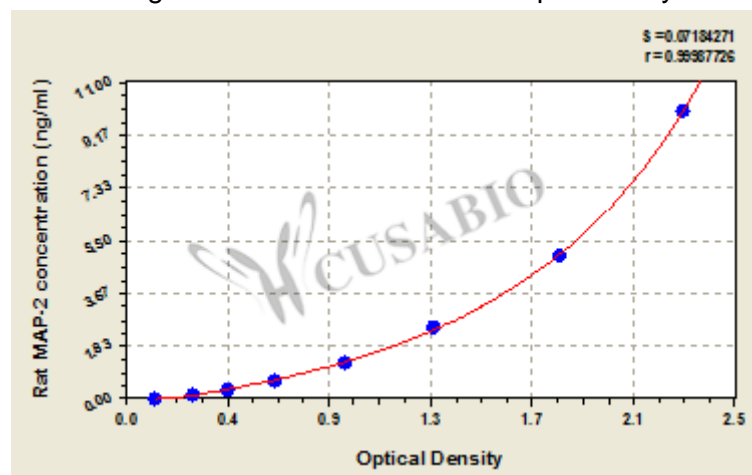
Recovery

The recovery of rat MAP-2 spiked to levels throughout the range of the assay in various matrices was evaluated. Samples were diluted prior to assay as directed in the Sample Preparation section.

Sample Type	Average % Recovery	Range
Serum (n=5)	95	91-98
EDTA plasma (n=4)	97	92-99

Typical

These standard curves are provided for demonstration only. A standard curve should be generated for each set of samples assayed.



ng/ml	OD1	OD2	Average	Corrected
10	2.329	2.312	2.321	2.185
5	1.844	1.776	1.810	1.674
2.5	1.274	1.296	1.285	1.149
1.25	0.923	0.917	0.920	0.784
0.625	0.634	0.624	0.629	0.493
0.312	0.433	0.443	0.438	0.302
0.156	0.297	0.282	0.290	0.154
0	0.138	0.134	0.136	?

Msds

{"0":{"fileurl":"https://www.cusabio.com/uploadfile/msds/MSDS CSB-E12806r.pdf","filename":"MSDS"}}