



Rat KI-67 ELISA kit

Product Code	CSB-E13175r									
Abbreviation	KI-67									
Target Name	KI-67									
Uniprot No.	Q5RJM0									
Alias	MKI67									
Product Type	ELISA Kit									
Immunogen Species	Rattus norvegicus (Rat)									
Sample Types	serum, plasma, tissue homogenates, cell lysates									
Detection Range	0.156 ng/mL-10 ng/mL									
Sensitivity	0.04 ng/mL									
Assay Time	1-5h									
Sample Volume	50-100ul									
Detection Wavelength	450 nm									
Lead Time	3-5 working days after you place the order, and it takes another 3-5 days for delivery via DHL or FedEx.									
Research Area	Cancer									
Gene Names	Nifk									
Tag Info	quantitative									
Protein Description	Sandwich									
Description	This Rat KI-67 ELISA Kit was designed for the quantitative measurement of Rat KI-67 protein in serum, plasma, tissue homogenates, cell lysates. It is a Sandwich ELISA kit, its detection range is 0.156 ng/mL-10 ng/mL and the sensitivity is 0.04 ng/mL.									
Product Precision	Intra-assay Precision (Precision within an assay): CV%<8% Three samples of known concentration were tested twenty times on one plate to assess. Inter-assay Precision (Precision between assays): CV%<10% Three samples of known concentration were tested in twenty assays to assess.									
Linearity	To assess the linearity of the assay, samples were spiked with high concentrations of rat KI-67 in various matrices and diluted with the Sample Diluent to produce samples with values within the dynamic range of the assay. <table><tr><td></td><td>Sample</td><td>Serum(n=4)</td></tr><tr><td rowspan="2">1:1</td><td>Average %</td><td>87</td></tr><tr><td>Range %</td><td>83-90</td></tr></table>			Sample	Serum(n=4)	1:1	Average %	87	Range %	83-90
	Sample	Serum(n=4)								
1:1	Average %	87								
	Range %	83-90								



1:2	Average %	93
	Range %	90-96
1:4	Average %	89
	Range %	85-93
1:8	Average %	100
	Range %	95-105

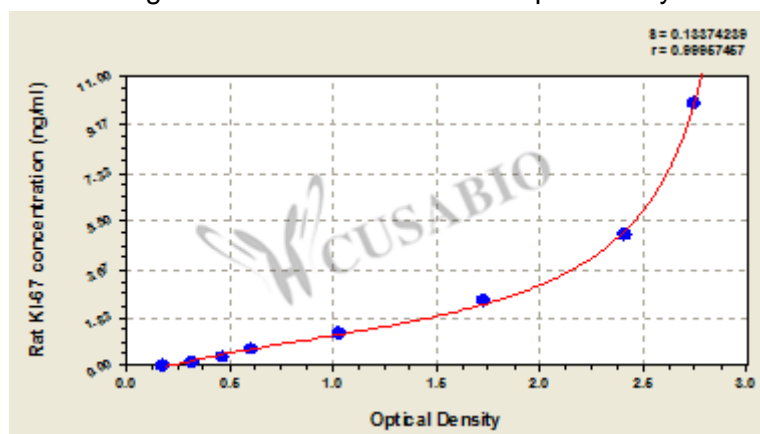
Recovery

The recovery of rat KI-67 spiked to levels throughout the range of the assay in various matrices was evaluated. Samples were diluted prior to assay as directed in the Sample Preparation section.

Sample Type	Average % Recovery	Range
Serum (n=5)	89	85-93
EDTA plasma (n=4)	92	88-96

Typical

These standard curves are provided for demonstration only. A standard curve should be generated for each set of samples assayed.



ng/ml	OD1	OD2	Average	Corrected
10	2.796	2.731	2.764	2.566
5	2.447	2.407	2.427	2.229
2.5	1.714	1.768	1.741	1.543
1.25	1.029	1.068	1.049	0.851
0.625	0.614	0.638	0.626	0.428
0.312	0.473	0.498	0.486	0.288
0.156	0.331	0.343	0.337	0.139
0	0.197	0.199	0.198	

Msds

{"0":{"fileurl":"https://www.cusabio.com/uploadfile/msds/MSDS CSB-E13175r.pdf","filename":"MSDS"}}