



Human Renalase/ Monoamine Oxidase-C(RNLS/ MAO-C)ELISA Kit

Product Code	CSB-E13945h
Abbreviation	C10orf59
Target Name	chromosome 10 open reading frame 59
Uniprot No.	Q5VYX0
Alias	C10orf59, FLJ11218, RENALASE, renalase
Product Type	ELISA Kit
Immunogen Species	Homo sapiens (Human)
Sample Types	serum, plasma, tissue homogenates
Detection Range	0.625 µg/mL-40 µg/mL
Sensitivity	0.156 µg/mL
Assay Time	1-5h
Sample Volume	50-100ul
Detection Wavelength	450 nm
Lead Time	3-5 working days after you place the order, and it takes another 3-5 days for delivery via DHL or FedEx.
Research Area	Cell Biology
Gene Names	RNLS
Tag Info	quantitative
Protein Description	Sandwich

Description

This Human C10orf59 ELISA Kit was designed for the quantitative measurement of Human C10orf59 protein in serum, plasma, tissue homogenates. It is a Sandwich ELISA kit, its detection range is 0.625 µg/mL-40 µg/mL and the sensitivity is 0.156 µg/mL .

Product Precision

Intra-assay Precision (Precision within an assay): CV%<8%
 Three samples of known concentration were tested twenty times on one plate to assess.

Inter-assay Precision (Precision between assays): CV%<10%
 Three samples of known concentration were tested in twenty assays to assess.

Linearity

To assess the linearity of the assay, samples were spiked with high concentrations of human RNLS in various matrices and diluted with the Sample Diluent to produce samples with values within the dynamic range of the assay.



?	Sample	Serum(n=4)
1:1	Average %	97
	Range %	92-104
1:2	Average %	94
	Range %	89-99
1:4	Average %	92
	Range %	88-98
1:8	Average %	87
	Range %	82-94

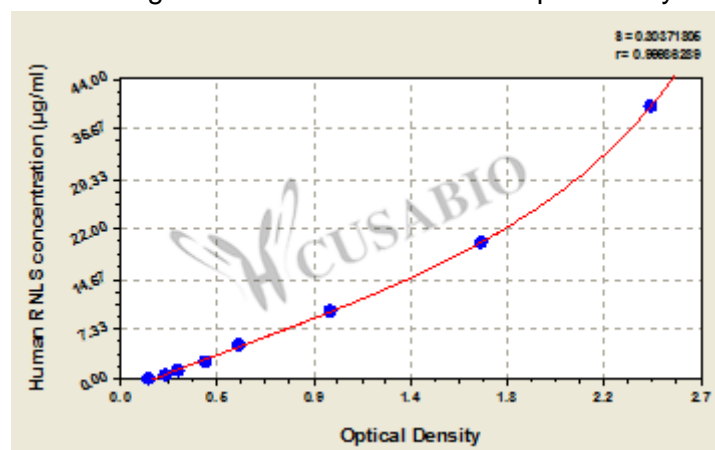
Recovery

The recovery of human RNLS spiked to levels throughout the range of the assay in various matrices was evaluated. Samples were diluted prior to assay as directed in the Sample Preparation section.

Sample Type	Average % Recovery	Range
Serum (n=5)	86	82-94
EDTA plasma (n=4)	97	93-105

Typical

These standard curves are provided for demonstration only. A standard curve should be generated for each set of samples assayed.



µg/ml	OD1	OD2	Average	Corrected
40	2.515	2.414	2.465	2.321
20	1.733	1.632	1.683	1.539
10	0.971	0.992	0.982	0.838
5	0.568	0.557	0.563	0.419
2.5	0.402	0.414	0.408	0.264
1.25	0.285	0.274	0.280	0.136
0.625	0.227	0.221	0.224	0.080
0	0.144	0.143	0.144	?

Msds

{"0":{"fileurl":"https://www.cusabio.com/uploadfile/msds/MSDS CSB-E13945h.pdf","filename":"MSDS"}}}