



Rabbit Krebs yon den Lundgen-6 (KL-6) ELISA Kit

Product Code	CSB-E14112Rb																			
Abbreviation	KL-6																			
Target Name	Krebs yon den Lundgen-6 (KL-6)																			
Product Type	ELISA Kit																			
Immunogen Species	Oryctolagus cuniculus (Rabbit)																			
Sample Types	serum, plasma, tissue homogenates																			
Detection Range	50 IU/mL-800 IU/mL																			
Sensitivity	25 IU/mL																			
Assay Time	1-5h																			
Sample Volume	50-100ul																			
Detection Wavelength	450 nm																			
Lead Time	3-5 working days after you place the order, and it takes another 3-5 days for delivery via DHL or FedEx.																			
Research Area	Others																			
Tag Info	quantitative																			
Protein Description	Competitive																			
Description	<p>This Rabbit KL-6 ELISA Kit was designed for the quantitative measurement of Rabbit KL-6 protein in serum, plasma, tissue homogenates. It is a Competitive ELISA kit, its detection range is 50 IU/mL-800 IU/mL and the sensitivity is 25 IU/mL .</p>																			
Product Precision	<p>Intra-assay Precision (Precision within an assay): CV%<15% Three samples of known concentration were tested twenty times on one plate to assess.</p> <p>Inter-assay Precision (Precision between assays): CV%<15% Three samples of known concentration were tested in twenty assays to assess.</p>																			
Linearity	<p>To assess the linearity of the assay, samples were spiked with high concentrations of rabbit KL-6 in various matrices and diluted with the Sample Diluent to produce samples with values within the dynamic range of the assay.</p> <table> <tr> <td>?</td><td>Sample</td><td>Serum(n=4)</td></tr> <tr> <td rowspan="2">1:1</td><td>Average %</td><td>87</td></tr> <tr> <td>Range %</td><td>82-93</td></tr> <tr> <td rowspan="2">1:2</td><td>Average %</td><td>94</td></tr> <tr> <td>Range %</td><td>89-99</td></tr> <tr> <td rowspan="2">1:4</td><td>Average %</td><td>92</td></tr> <tr> <td>Range %</td><td>87-96</td></tr> </table>		?	Sample	Serum(n=4)	1:1	Average %	87	Range %	82-93	1:2	Average %	94	Range %	89-99	1:4	Average %	92	Range %	87-96
?	Sample	Serum(n=4)																		
1:1	Average %	87																		
	Range %	82-93																		
1:2	Average %	94																		
	Range %	89-99																		
1:4	Average %	92																		
	Range %	87-96																		



1:8	Average %	95
	Range %	90-100

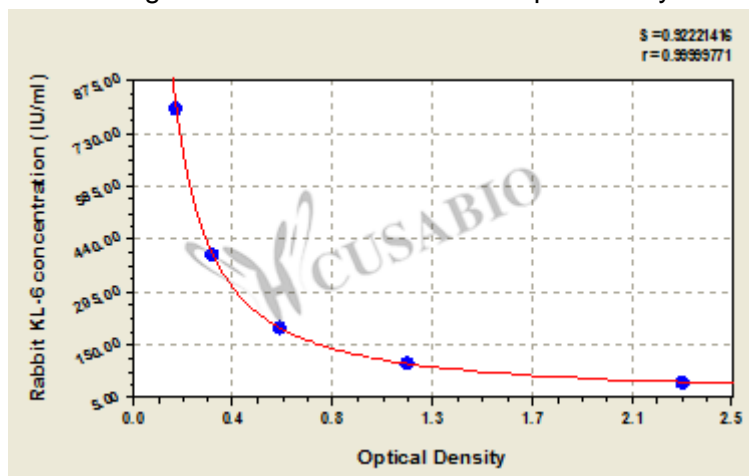
Recovery

The recovery of rabbit KL-6 spiked to levels throughout the range of the assay in various matrices was evaluated. Samples were diluted prior to assay as directed in the Sample Preparation section.

Sample Type	Average % Recovery	Range
Serum (n=5)	95	91-99
EDTA plasma (n=4)	89	87-93

Typical

These standard curves are provided for demonstration only. A standard curve should be generated for each set of samples assayed.



IU/ml	OD1	OD2	Average
800	0.191	0.198	0.195
400	0.351	0.337	0.344
200	0.614	0.627	0.621
100	1.154	1.132	1.143
50	2.330	2.224	2.277