



Rabbit thrombin-antithrombin complex(TAT)ELISA Kit

Product Code	CSB-E17821Rb
Abbreviation	TAT
Target Name	thrombin-antithrombin complex(TAT)
Product Type	ELISA Kit
Immunogen Species	Oryctolagus cuniculus (Rabbit)
Sample Types	serum, plasma
Detection Range	3.12 ng/mL-200 ng/mL
Sensitivity	0.78 ng/mL
Assay Time	1-5h
Sample Volume	50-100ul
Detection Wavelength	450 nm
Lead Time	3-5 working days after you place the order, and it takes another 3-5 days for delivery via DHL or FedEx.
Research Area	Cardiovascular
Tag Info	quantitative
Protein Description	Sandwich

Description

This Rabbit TAT ELISA Kit was designed for the quantitative measurement of Rabbit TAT protein in serum, plasma. It is a Sandwich ELISA kit, its detection range is 3.12 ng/mL-200 ng/mL and the sensitivity is 0.78 ng/mL.

Product Precision

Intra-assay Precision (Precision within an assay): CV%<8%
 Three samples of known concentration were tested twenty times on one plate to assess.

Inter-assay Precision (Precision between assays): CV%<10%
 Three samples of known concentration were tested in twenty assays to assess.

Linearity

To assess the linearity of the assay, samples were spiked with high concentrations of rabbit TAT in various matrices and diluted with the Sample Diluent to produce samples with values within the dynamic range of the assay.

?	Sample	Serum(n=4)
1:1	Average %	95
	Range %	91-100
1:2	Average %	92
	Range %	85-98
1:4	Average %	90-105
	Range %	83



1:8	Average %	81-92
	Range %	96

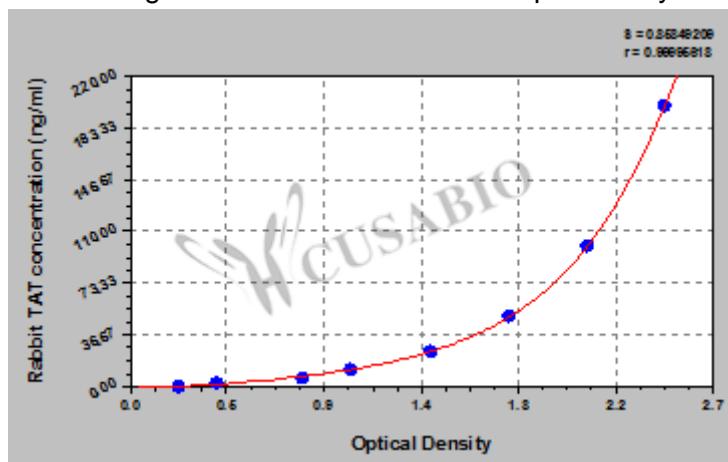
Recovery

The recovery of rabbit TAT spiked to levels throughout the range of the assay in various matrices was evaluated. Samples were diluted prior to assay as directed in the Sample Preparation section.

Sample Type	Average % Recovery	Range
Serum (n=5)	93	84-98
EDTA plasma (n=4)	91	85-100

Typical

These standard curves are provided for demonstration only. A standard curve should be generated for each set of samples assayed.



ng/ml	OD1	OD2	Average	Corrected
200	2.517	2.420	2.469	2.232
100	2.151	2.076	2.114	1.877
50	1.801	1.704	1.753	1.516
25	1.452	1.339	1.396	1.159
12.5	1.032	1.024	1.028	0.791
6.25	0.831	0.779	0.805	0.568
3.12	0.414	0.409	0.412	0.175
0	0.245	0.228	0.237	?

MsdS

{"0":{"fileurl":"https://www.cusabio.com/uploadfile/msds/MSDS CSB-E17821Rb.pdf","filename":"MSDS"}}