



Monkey C-C motif chemokine 17(CCL17) ELISA kit

Product Code	CSB-EL004780RH
Protein Biological Process 2	chemokine
Abbreviation	CCL17
Protein Biological Process 1	Immunity
Target Name	chemokine (C-C motif) ligand 17
Uniprot No.	Q8HYP9
Alias	A-152E5.3, ABCD-2, MGC138271, MGC138273, SCYA17, TARC, T cell-directed CC chemokine small inducible cytokine A17 small inducible cytokine subfamily A (Cys-Cys), member 17 thymus and activation-regul
Product Type	ELISA Kit
Immunogen Species	Monkey
Protein Biological Process 3	Chemotaxis
Sample Types	serum, plasma, tissue homogenates
Detection Range	39 pg/mL-2500 pg/mL
Sensitivity	9.8 pg/mL
Assay Time	1-5h
Sample Volume	50-100ul
Detection Wavelength	450 nm
Lead Time	3-5 working days after you place the order, and it takes another 3-5 days for delivery via DHL or FedEx.
Research Area	Immunology
Gene Names	CCL17
Tag Info	quantitative
Protein Description	Sandwich
Description	This Monkey CCL17 ELISA Kit was designed for the quantitative measurement of Monkey CCL17 protein in serum, plasma, tissue homogenates. It is a Sandwich ELISA kit, its detection range is 39 pg/mL-2500 pg/mL and the sensitivity is 9.8 pg/mL.
Target Details	This gene is one of several Cys-Cys (CC) cytokine genes clustered on the q arm



of chromosome 16. Cytokines are a family of secreted proteins involved in immunoregulatory and inflammatory processes. The CC cytokines are proteins characterized by two adjacent cysteines. The cytokine encoded by this gene displays chemotactic activity for T lymphocytes, but not monocytes or granulocytes. The product of this gene binds to chemokine receptors CCR4 and CCR8. This chemokine plays important roles in T cell development in thymus as well as in trafficking and activation of mature T cells.

Product Precision

Intra-assay Precision (Precision within an assay): CV%<8%

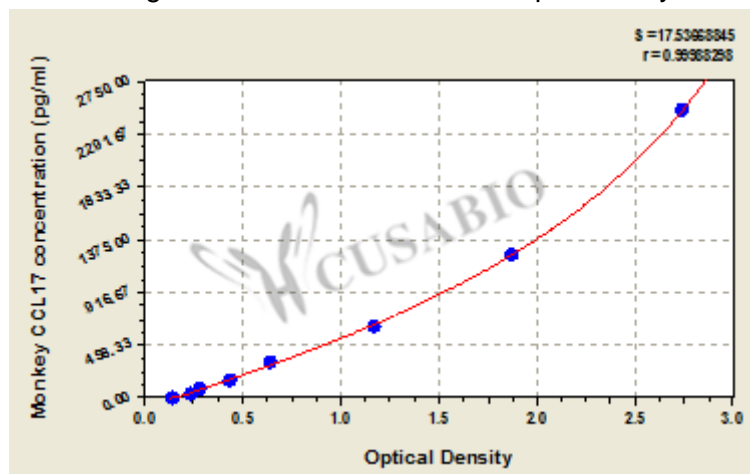
Three samples of known concentration were tested twenty times on one plate to assess.

Inter-assay Precision (Precision between assays): CV%<10%

Three samples of known concentration were tested in twenty assays to assess.

Typical

These standard curves are provided for demonstration only. A standard curve should be generated for each set of samples assayed.



pg/ml	OD1	OD2	Average	Corrected
2500	2.813	2.643	2.728	2.572
1250	1.857	1.875	1.866	1.710
625	1.178	1.167	1.173	1.017
312.5	0.653	0.637	0.645	0.489
156.25	0.452	0.444	0.448	0.292
78.12	0.296	0.292	0.294	0.138
39	0.242	0.251	0.247	0.091
0	0.154	0.158	0.156	

Msds

{"0":{"fileurl":"https://www.cusabio.com/uploadfile/msds/MSDS CSB-EL004780RH.pdf","filename":"MSDS"}}