



Mouse Dickkopf-related protein 3(DKK3) ELISA kit

Product Code	CSB-EL006922MO
Abbreviation	DKK3
Protein Biological Process 1	Signaling Pathway
Target Name	dickkopf homolog 3 (Xenopus laevis)
Uniprot No.	Q9QUN9
Alias	REIC, RIG, RIG-like 5-6 RIG-like 7-1 dickkopf 3 dickkopf homolog 3 regulated in glioma
Product Type	ELISA Kit
Immunogen Species	Mus musculus (Mouse)
Protein Biological Process 3	Wnt signaling pathway
Sample Types	serum, plasma, tissue homogenates
Detection Range	9.4 pg/mL-600 pg/mL
Sensitivity	2.35 pg/mL
Assay Time	1-5h
Sample Volume	50-100ul
Detection Wavelength	450 nm
Lead Time	3-5 working days after you place the order, and it takes another 3-5 days for delivery via DHL or FedEx.
Research Area	Stem Cells
Gene Names	Dkk3
Tag Info	quantitative
Protein Description	Sandwich

Description	This Mouse DKK3 ELISA Kit was designed for the quantitative measurement of Mouse DKK3 protein in serum, plasma, tissue homogenates. It is a Sandwich ELISA kit, its detection range is 9.4 pg/mL-600 pg/mL and the sensitivity is 2.35 pg/mL.
-------------	---

Target Details	This gene encodes a protein that is a member of the dickkopf family. The secreted protein contains two cysteine rich regions and is involved in embryonic development through its interactions with the Wnt signaling pathway. The expression of this gene is decreased in a variety of cancer cell lines and it may function as a tumor suppressor gene. Alternative splicing results in multiple transcript variants encoding the same protein.
----------------	---



Product Precision

Intra-assay Precision (Precision within an assay): CV%<8%

Three samples of known concentration were tested twenty times on one plate to assess.

Inter-assay Precision (Precision between assays): CV%<10%

Three samples of known concentration were tested in twenty assays to assess.

Linearity

To assess the linearity of the assay, samples were spiked with high concentrations of mouse DKK3 in various matrices and diluted with the Sample Diluent to produce samples with values within the dynamic range of the assay.

	Sample	Serum(n=4)
1:1	Average %	90
	Range %	85-95
1:2	Average %	101
	Range %	97-104
1:4	Average %	83
	Range %	80-86
1:8	Average %	104
	Range %	100-109

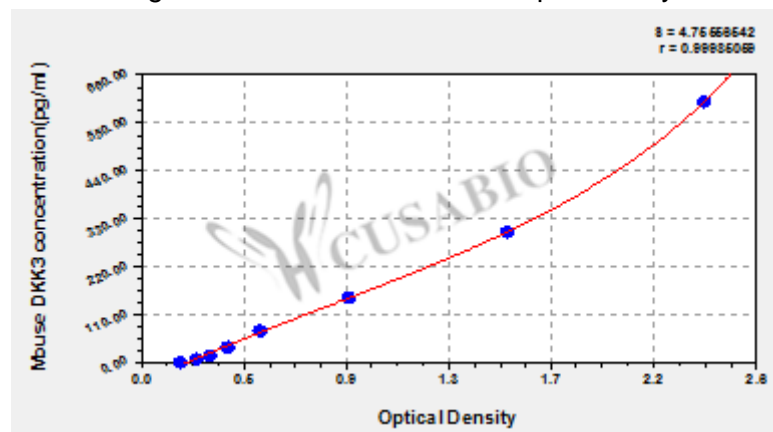
Recovery

The recovery of mouse DKK3 spiked to levels throughout the range of the assay in various matrices was evaluated. Samples were diluted prior to assay as directed in the Sample Preparation section.

Sample Type	Average % Recovery	Range
Serum (n=5)	90	85-96
EDTA plasma (n=4)	93	87-98

Typical

These standard curves are provided for demonstration only. A standard curve should be generated for each set of samples assayed.



pg/ml	OD1	OD2	Average	Corrected
600	2.289	2.487	2.388	2.204
300	1.582	1.532	1.557	1.373
150	0.881	0.898	0.890	0.706
75	0.530	0.502	0.516	0.332
37.5	0.382	0.375	0.379	0.195
18.8	0.312	0.306	0.309	0.125
9.4	0.251	0.248	0.250	0.066
0	0.182	0.186	0.184	

**Msd**

```
{"0":{"fileurl":"https://www.cusabio.com/uploadfile/msds/MSDS CSB-EL006922MO.pdf","filename":"MSDS"}}
```