



# Human Keratin, type II cytoskeletal 1(KRT1) ELISA kit

<b>Product Code</b>	CSB-EL012503HU
<b>Abbreviation</b>	KRT1
<b>Target Name</b>	keratin 1
<b>Uniprot No.</b>	P04264
<b>Alias</b>	CK1, EHK, EHK1, EPPK, K1, KRT1A, NEPPK, cytokeratin 1 epidermolytic hyperkeratosis 1 hair alpha protein keratin, type II cytoskeletal 1
<b>Product Type</b>	ELISA Kit
<b>Immunogen Species</b>	Homo sapiens (Human)
<b>Sample Types</b>	serum, plasma, tissue homogenates, cell lysates
<b>Detection Range</b>	0.156 ng/mL-10 ng/mL
<b>Sensitivity</b>	0.039 ng/mL
<b>Assay Time</b>	1-5h
<b>Sample Volume</b>	50-100ul
<b>Detection Wavelength</b>	450 nm
<b>Lead Time</b>	3-5 working days after you place the order, and it takes another 3-5 days for delivery via DHL or FedEx.
<b>Research Area</b>	Signal Transduction
<b>Gene Names</b>	KRT1
<b>Tag Info</b>	quantitative
<b>Protein Description</b>	Sandwich
<b>Description</b>	This Human KRT1 ELISA Kit was designed for the quantitative measurement of Human KRT1 protein in serum, plasma, tissue homogenates, cell lysates. It is a Sandwich ELISA kit, its detection range is 0.156 ng/mL-10 ng/mL and the sensitivity is 0.039 ng/mL.
<b>Target Details</b>	This protein is a member of the keratin gene family. The type II cytokeratins consist of basic or neutral proteins which are arranged in pairs of heterotypic keratin chains coexpressed during differentiation of simple and stratified epithelial tissues. This type II cytokeratin is specifically expressed in the spinous and granular layers of the epidermis with family member KRT10 and mutations in these genes have been associated with bullous congenital ichthyosiform erythroderma. The type II cytokeratins are clustered in a region of chromosome 12q12-q13.
<b>Product Precision</b>	Intra-assay Precision (Precision within an assay): CV%<8%



Three samples of known concentration were tested twenty times on one plate to assess.

Inter-assay Precision (Precision between assays): CV%<10%

Three samples of known concentration were tested in twenty assays to assess.

## Linearity

To assess the linearity of the assay, samples were spiked with high concentrations of human KRT1 in various matrices and diluted with the Sample Diluent to produce samples with values within the dynamic range of the assay.

	Sample	Serum(n=4)
1:1	Average %	90
	Range %	87-93
1:2	Average %	85
	Range %	81-90
1:4	Average %	99
	Range %	95-104
1:8	Average %	97
	Range %	91-103

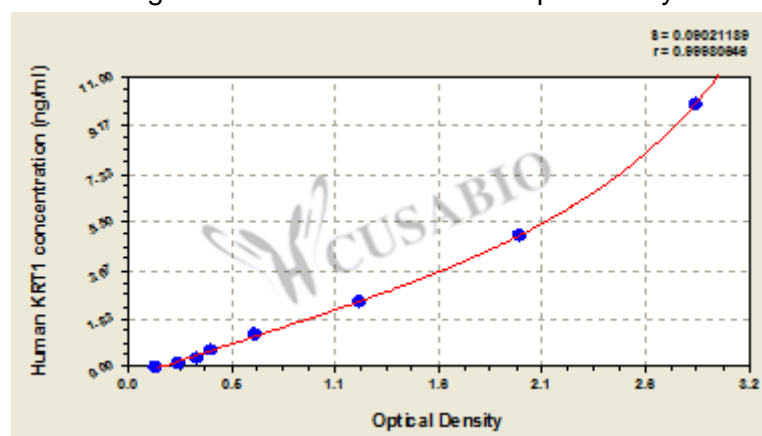
## Recovery

The recovery of human KRT1 spiked to levels throughout the range of the assay in various matrices was evaluated. Samples were diluted prior to assay as directed in the Sample Preparation section.

Sample Type	Average % Recovery	Range
Serum (n=5)	87	82-91
EDTA plasma (n=4)	92	85-96

## Typical

These standard curves are provided for demonstration only. A standard curve should be generated for each set of samples assayed.



ng/ml	OD1	OD2	Average	Corrected
10	2.862	2.898	2.880	2.727
5	1.991	1.999	1.995	1.842
2.5	1.172	1.198	1.185	1.032
1.25	0.640	0.674	0.657	0.504
0.625	0.425	0.436	0.431	0.278
0.312	0.353	0.368	0.361	0.208
0.156	0.260	0.268	0.264	0.111
0	0.152	0.154	0.153	

## Msds

{ "0": { "fileurl": "https://www.cusabio.com/uploadfile/msds/MSDS CSB-



EL012503HU.pdf", "filename": "MSDS"}}}