



# Mouse Nephrin(NPHS1) ELISA kit

<b>Product Code</b>	CSB-EL015988MO
<b>Abbreviation</b>	NPHS1
<b>Protein Biological Process 1</b>	Cell Adhesion
<b>Target Name</b>	nephrosis 1, congenital, Finnish type (nephrin)
<b>Uniprot No.</b>	Q9QZS7
<b>Alias</b>	CNF, NPHN, nephrin, nephrin renal glomerulus-specific cell adhesion receptor
<b>Product Type</b>	ELISA Kit
<b>Immunogen Species</b>	Mus musculus (Mouse)
<b>Protein Biological Process 3</b>	Cell adhesion
<b>Sample Types</b>	serum, plasma, tissue homogenates
<b>Detection Range</b>	250 pg/mL-4000 pg/mL
<b>Sensitivity</b>	250 pg/mL
<b>Assay Time</b>	1-5h
<b>Sample Volume</b>	50-100ul
<b>Detection Wavelength</b>	450 nm
<b>Lead Time</b>	3-5 working days after you place the order, and it takes another 3-5 days for delivery via DHL or FedEx.
<b>Research Area</b>	Signal Transduction
<b>Gene Names</b>	Nphs1
<b>Tag Info</b>	quantitative
<b>Protein Description</b>	Competitive
<b>Description</b>	<p>This Mouse NPHS1 ELISA Kit was designed for the quantitative measurement of Mouse NPHS1 protein in serum, plasma, tissue homogenates. It is a Competitive ELISA kit, its detection range is 250 pg/mL-4000 pg/mL and the sensitivity is 250 pg/mL.</p>
<b>Product Precision</b>	<p><b>Intra-assay Precision (Precision within an assay): CV%&lt;8%</b>  Three samples of known concentration were tested twenty times on one plate to assess.</p> <p><b>Inter-assay Precision (Precision between assays): CV%&lt;10%</b>  Three samples of known concentration were tested in twenty assays to assess.</p>



## Linearity

To assess the linearity of the assay, samples were spiked with high concentrations of mouse NPHS1 in various matrices and diluted with the Sample Diluent to produce samples with values within the dynamic range of the assay.

?	Sample	Serum(n=4)
	Average %	92
1:100	Range %	86-98
	Average %	97
1:200	Range %	92-102
	Average %	85
1:400	Range %	82-88
	Average %	88
1:800	Range %	83-94

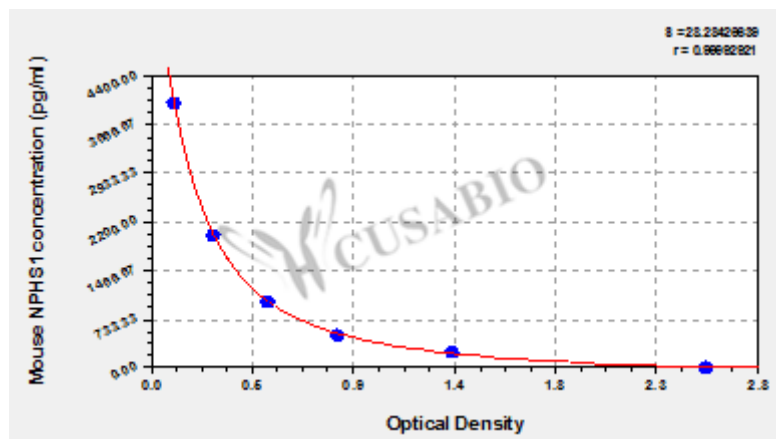
## Recovery

The recovery of mouse NPHS1 spiked to levels throughout the range of the assay in various matrices was evaluated. Samples were diluted prior to assay as directed in the Sample Preparation section.

Sample Type	Average % Recovery	Range
Serum (n=5)	92	87-96
EDTA plasma (n=4)	94	90-97

## Typical

These standard curves are provided for demonstration only. A standard curve should be generated for each set of samples assayed.



pg/ml	OD1	OD2	Average
4000	0.110	0.115	0.113
2000	0.287	0.298	0.293
1000	0.535	0.544	0.540
500	0.862	0.848	0.855
250	1.366	1.375	1.371
0	2.502	2.523	2.513