



Mouse Bone marrow proteoglycan(PRG2) ELISA kit

Product Code	CSB-EL018670MO
Abbreviation	PRG2
Protein Biological Process 1	Immunity
Target Name	proteoglycan 2, bone marrow (natural killer cell activator, eosinophil granule major basic protein)
Uniprot No.	Q61878
Alias	BMPG, MBP, MBP1, MGC14537, bone-marrow proteoglycan eosinophil granule major basic protein eosinophil major basic protein natural killer cell activator proteoglycan 2 proteoglycan 2 preproprotein
Product Type	ELISA Kit
Immunogen Species	Mus musculus (Mouse)
Protein Biological Process 3	Immunity
Sample Types	serum, plasma, tissue homogenates
Detection Range	3.9 ng/mL-250 ng/mL
Sensitivity	0.98 ng/mL
Assay Time	1-5h
Sample Volume	50-100ul
Detection Wavelength	450 nm
Lead Time	3-5 working days after you place the order, and it takes another 3-5 days for delivery via DHL or FedEx.
Research Area	Immunology
Gene Names	Prg2
Tag Info	quantitative
Protein Description	Sandwich
Description	This Mouse PRG2 ELISA Kit was designed for the quantitative measurement of Mouse PRG2 protein in serum, plasma, tissue homogenates. It is a Sandwich ELISA kit, its detection range is 3.9 ng/mL-250 ng/mL and the sensitivity is 0.98 ng/mL.
Target Details	This protein is the predominant constituent of the crystalline core of the eosinophil granule. High levels of the proform of this protein are also present in



placenta and pregnancy serum, where it exists as a complex with several other proteins including pregnancy-associated plasma protein A (PAPPA), angiotensinogen (AGT), and C3dg. This protein may be involved in antiparasitic defense mechanisms as a cytotoxin and helminthotoxin, and in immune hypersensitivity reactions. It is directly implicated in epithelial cell damage, exfoliation, and bronchospasm in allergic diseases.

Product Precision

Intra-assay Precision (Precision within an assay): CV%<8%

Three samples of known concentration were tested twenty times on one plate to assess.

Inter-assay Precision (Precision between assays): CV%<10%

Three samples of known concentration were tested in twenty assays to assess.

Linearity

To assess the linearity of the assay, samples were spiked with high concentrations of mouse PRG2 in various matrices and diluted with the Sample Diluent to produce samples with values within the dynamic range of the assay.

	Sample	Serum(n=4)
1:5	Average %	94
	Range %	89-97
1:10	Average %	103
	Range %	98-107
1:20	Average %	90
	Range %	84-94
1:40	Average %	98
	Range %	92-102

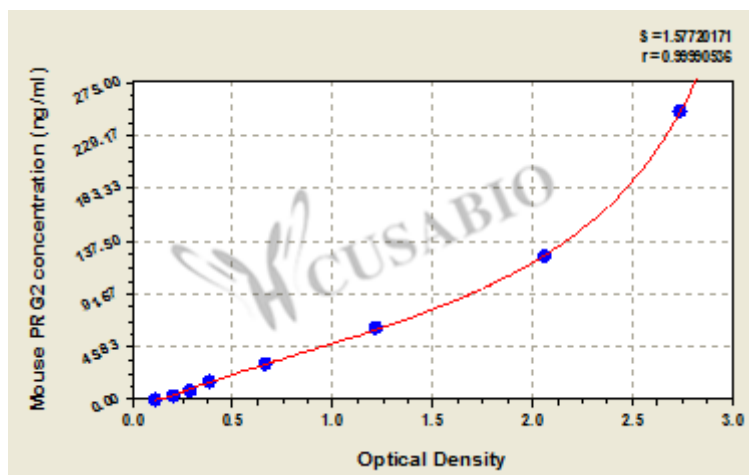
Recovery

The recovery of mouse PRG2 spiked to levels throughout the range of the assay in various matrices was evaluated. Samples were diluted prior to assay as directed in the Sample Preparation section.

Sample Type	Average % Recovery	Range
Serum (n=5)	91	85-96
EDTA plasma (n=4)	94	88-97

Typical

These standard curves are provided for demonstration only. A standard curve should be generated for each set of samples assayed.



ng/ml	OD1	OD2	Average	Corrected
250	2.772	2.664	2.718	2.597
125	2.026	2.076	2.051	1.930
62.5	1.218	1.200	1.209	1.088
31.25	0.677	0.654	0.666	0.545
15.6	0.392	0.387	0.390	0.269
7.8	0.299	0.287	0.293	0.172
3.9	0.208	0.203	0.206	0.085
0	0.122	0.120	0.121	

Msds

```
{"0":{"fileurl":"https://www.cusabio.com/uploadfile/msds/MSDS CSB-EL018670MO.pdf","filename":"MSDS"}}
```