



# Human Leukocyte elastase inhibitor(SERPINB1) ELISA kit

<b>Product Code</b>	CSB-EL021065HU
<b>Abbreviation</b>	SERPINB1
<b>Target Name</b>	serpin peptidase inhibitor, clade B (ovalbumin), member 1
<b>Uniprot No.</b>	P30740
<b>Alias</b>	EI, ELANH2, LEI, M/NEI, MNEI, PI2, anti-elastase protease inhibitor 2 (anti-elastase), monocyte/neutrophil derived serine (or cysteine) proteinase inhibitor, clade B (ovalbumin), member 1
<b>Product Type</b>	ELISA Kit
<b>Immunogen Species</b>	Homo sapiens (Human)
<b>Sample Types</b>	serum, plasma, tissue homogenates, cell lysates
<b>Detection Range</b>	0.625 ng/mL-40 ng/mL
<b>Sensitivity</b>	0.156 ng/mL
<b>Assay Time</b>	1-5h
<b>Sample Volume</b>	50-100ul
<b>Detection Wavelength</b>	450 nm
<b>Lead Time</b>	3-5 working days after you place the order, and it takes another 3-5 days for delivery via DHL or FedEx.
<b>Research Area</b>	Cell Biology
<b>Gene Names</b>	SERPINB1
<b>Tag Info</b>	quantitative
<b>Protein Description</b>	Sandwich
<b>Description</b>	This Human SERPINB1 ELISA Kit was designed for the quantitative measurement of Human SERPINB1 protein in serum, plasma, tissue homogenates, cell lysates. It is a Sandwich ELISA kit, its detection range is 0.625 ng/mL-40 ng/mL and the sensitivity is 0.156 ng/mL.
<b>Product Precision</b>	<p>Intra-assay Precision (Precision within an assay): CV%&lt;8% Three samples of known concentration were tested twenty times on one plate to assess.</p> <p>Inter-assay Precision (Precision between assays): CV%&lt;10% Three samples of known concentration were tested in twenty assays to assess.</p>
<b>Linearity</b>	



To assess the linearity of the assay, samples were spiked with high concentrations of human SERPINB1 in various matrices and diluted with the Sample Diluent to produce samples with values within the dynamic range of the assay.

	Sample	Serum(n=4)
1:1	Average %	97
	Range %	88-101
1:2	Average %	93
	Range %	84-97
1:4	Average %	91
	Range %	85-95
1:8	Average %	98
	Range %	90-101

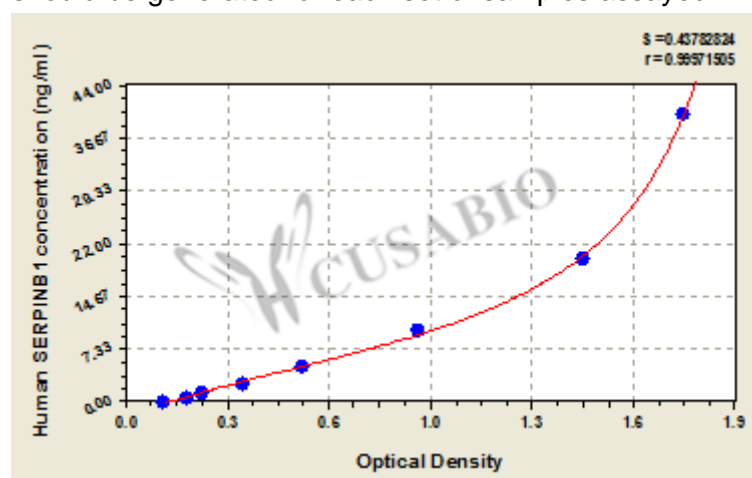
## Recovery

The recovery of human SERPINB1 spiked to levels throughout the range of the assay in various matrices was evaluated. Samples were diluted prior to assay as directed in the Sample Preparation section.

Sample Type	Average % Recovery	Range
Serum (n=5)	102	94-107
EDTA plasma (n=4)	98	90-102

## Typical

These standard curves are provided for demonstration only. A standard curve should be generated for each set of samples assayed.



ng/ml	OD1	OD2	Average	Corrected
40	1.768	1.700	1.734	1.606
20	1.409	1.434	1.422	1.294
10	0.886	0.944	0.915	0.787
5	0.565	0.551	0.558	0.430
2.5	0.379	0.363	0.371	0.243
1.25	0.245	0.252	0.249	0.121
0.625	0.201	0.197	0.199	0.071
0	0.130	0.126	0.128	

## Msds

```
{"0":{"fileurl":"https://www.cusabio.com/uploadfile/msds/MSDS CSB-EL021065HU.pdf","filename":"MSDS"}}
```