



Human Serpin B5(SERPINB5) ELISA kit

Product Code	CSB-EL021073HU
Abbreviation	SERPINB5
Target Name	serpin peptidase inhibitor, clade B (ovalbumin), member 5
Uniprot No.	P36952
Alias	PI5, maspin, protease inhibitor 5 (maspin) serine (or cysteine) proteinase inhibitor, clade B (ovalbumin), member 5
Product Type	ELISA Kit
Immunogen Species	Homo sapiens (Human)
Sample Types	serum, plasma, tissue homogenates, cell lysates
Detection Range	0.156 ng/mL-10 ng/mL
Sensitivity	0.039 ng/mL
Assay Time	1-5h
Sample Volume	50-100ul
Detection Wavelength	450 nm
Lead Time	3-5 working days after you place the order, and it takes another 3-5 days for delivery via DHL or FedEx.
Research Area	Others
Gene Names	SERPINB5
Tag Info	quantitative
Protein Description	Sandwich

Description

This Human SERPINB5 ELISA Kit was designed for the quantitative measurement of Human SERPINB5 protein in serum, plasma, tissue homogenates, cell lysates. It is a Sandwich ELISA kit, its detection range is 0.156 ng/mL-10 ng/mL and the sensitivity is 0.039 ng/mL .

Product Precision

Intra-assay Precision (Precision within an assay): CV%<8%
 Three samples of known concentration were tested twenty times on one plate to assess.

Inter-assay Precision (Precision between assays): CV%<10%
 Three samples of known concentration were tested in twenty assays to assess.

Linearity

To assess the linearity of the assay, samples were spiked with high concentrations of human SERPINB5 in various matrices and diluted with the Sample Diluent to produce samples with values within the dynamic range of the assay.

?	Sample	Serum(n=4)
---	--------	------------



1:1	Average %	90
	Range %	86-93
1:2	Average %	100
	Range %	97-102
1:4	Average %	94
	Range %	89-97
1:8	Average %	97
	Range %	91-100

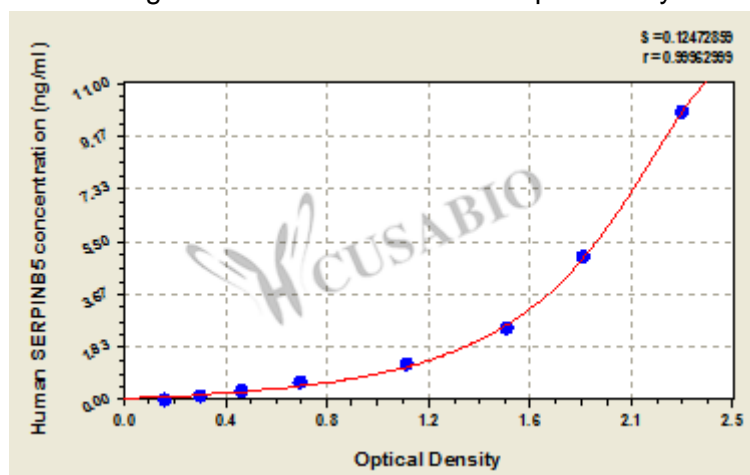
Recovery

The recovery of human SERPINB5 spiked to levels throughout the range of the assay in various matrices was evaluated. Samples were diluted prior to assay as directed in the Sample Preparation section.

Sample Type	Average % Recovery	Range
Serum (n=5)	94	89-97
EDTA plasma (n=4)	97	90-100

Typical

These standard curves are provided for demonstration only. A standard curve should be generated for each set of samples assayed.



ng/ml	OD1	OD2	Average	Corrected
10	2.286	2.226	2.256	2.074
5	1.876	1.846	1.861	1.679
2.5	1.562	1.550	1.556	1.374
1.25	1.157	1.142	1.150	0.968
0.625	0.718	0.729	0.724	0.542
0.312	0.480	0.498	0.489	0.307
0.156	0.318	0.324	0.321	0.139
0	0.181	0.183	0.182	?

Msds

{"0":{"fileurl":"https://www.cusabio.com/uploadfile/msds/MSDS CSB-EL021073HU.pdf","filename":"MSDS"}}}