



# Human Glia-derived nexin(SERPINE2) ELISA kit

|                                     |  |
|-------------------------------------|--|
| <b>Product Code</b>                 | CSB-EL021082HU   |
| <b>Abbreviation</b>                 | SERPINE2   |
| <b>Protein Biological Process 1</b> | Developmental Protein  |
| <b>Target Name</b>                  | serpin peptidase inhibitor, clade E (nexin, plasminogen activator inhibitor type 1), member 2  |
| <b>Uniprot No.</b>                  | P07093   |
| <b>Alias</b>                        | GDN, PI7, PN1, PNI, OTTHUMP00000203766 glial-derived neurite promoting factor glial-derived nexin 1 plasminogen activator inhibitor type 1, member 2 protease inhibitor 7 (protease nexin I) serine (o |
| <b>Product Type</b>                 | ELISA Kit  |
| <b>Immunogen Species</b>            | Homo sapiens (Human)   |
| <b>Protein Biological Process 3</b> | Differentiation  |
| <b>Sample Types</b>                 | serum, plasma, tissue homogenates  |
| <b>Detection Range</b>              | 0.312 ng/mL-20 ng/mL   |
| <b>Sensitivity</b>                  | 0.078 ng/mL  |
| <b>Assay Time</b>                   | 1-5h   |
| <b>Sample Volume</b>                | 50-100ul   |
| <b>Detection Wavelength</b>         | 450 nm   |
| <b>Lead Time</b>                    | 3-5 working days after you place the order, and it takes another 3-5 days for delivery via DHL or FedEx.   |
| <b>Research Area</b>                | Cell Biology   |
| <b>Gene Names</b>                   | SERPINE2   |
| <b>Tag Info</b>                     | quantitative   |
| <b>Protein Description</b>          | Sandwich   |

**Description**

This Human SERPINE2 ELISA Kit was designed for the quantitative measurement of Human SERPINE2 protein in serum, plasma, tissue homogenates. It is a Sandwich ELISA kit, its detection range is 0.312 ng/mL-20 ng/mL and the sensitivity is 0.078 ng/mL.

**Product Precision**

**Intra-assay Precision (Precision within an assay): CV%<8%**  
 Three samples of known concentration were tested twenty times on one plate to assess.

**Inter-assay Precision (Precision between assays): CV%<10%**



Three samples of known concentration were tested in twenty assays to assess.

### Linearity

To assess the linearity of the assay, samples were spiked with high concentrations of human SERPINE2 in various matrices and diluted with the Sample Diluent to produce samples with values within the dynamic range of the assay.

|     |           |            |
|-----|-----------|------------|
| ?   | Sample    | Serum(n=4) |
|     | Average % | 85         |
| 1:1 | Range %   | 82-87      |
|     | Average % | 96         |
| 1:2 | Range %   | 93-99      |
|     | Average % | 98         |
| 1:4 | Range %   | 94-103     |
|     | Average % | 97         |
| 1:8 | Range %   | 93-100     |

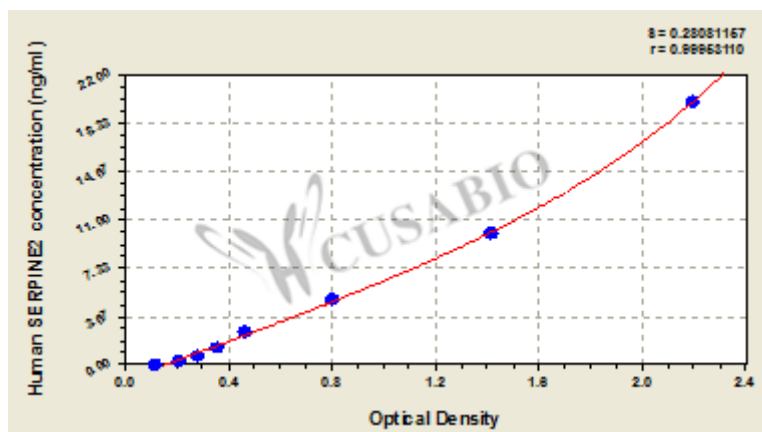
### Recovery

The recovery of human SERPINE2 spiked to levels throughout the range of the assay in various matrices was evaluated. Samples were diluted prior to assay as directed in the Sample Preparation section.

| Sample Type       | Average % Recovery | Range   |
|-------------------|--------------------|---------|
| Serum (n=5)       | 88                 | 84-92   |
| EDTA plasma (n=4) | 107                | 103-110 |

### Typical

These standard curves are provided for demonstration only. A standard curve should be generated for each set of samples assayed.



| ng/ml | OD1   | OD2   | Average | Corrected |
|-------|-------|-------|---------|-----------|
| 20    | 2.281 | 2.108 | 2.195   | 2.065     |
| 10    | 1.405 | 1.432 | 1.419   | 1.289     |
| 5     | 0.822 | 0.801 | 0.812   | 0.682     |
| 2.5   | 0.483 | 0.468 | 0.476   | 0.346     |
| 1.25  | 0.365 | 0.372 | 0.369   | 0.239     |
| 0.625 | 0.287 | 0.298 | 0.293   | 0.163     |
| 0.312 | 0.222 | 0.220 | 0.221   | 0.091     |
| 0     | 0.131 | 0.129 | 0.130   | ?         |

## Msds

```
{
  "0": {
    "fileurl": "https://www.cusabio.com/uploadfile/msds/MSDS CSB-EL021082HU.pdf",
    "filename": "MSDS"
  }
}
```