



Rabbit Sex hormone-binding globulin(SHBG) ELISA kit

Product Code	CSB-EL021252RB
Abbreviation	SHBG
Target Name	sex hormone-binding globulin
Uniprot No.	P15196
Alias	ABP, MGC126834, MGC138391, SBP, TEBG, androgen binding protein sex steroid-binding protein testis-specific androgen-binding protein testosterone-binding beta-globulin testosterone-estradiol-binding
Product Type	ELISA Kit
Immunogen Species	Oryctolagus cuniculus (Rabbit)
Sample Types	serum, plasma, tissue homogenates
Detection Range	25 pmol/mL-400 pmol/mL
Sensitivity	25 pmol/mL
Assay Time	1-5h
Sample Volume	50-100ul
Detection Wavelength	450 nm
Lead Time	3-5 working days after you place the order, and it takes another 3-5 days for delivery via DHL or FedEx.
Research Area	Signal Transduction
Gene Names	SHBG
Tag Info	quantitative
Protein Description	Competitive
Description	This Rabbit SHBG ELISA Kit was designed for the quantitative measurement of Rabbit SHBG protein in serum, plasma, tissue homogenates. It is a Competitive ELISA kit, its detection range is 25 pmol/mL-400 pmol/mL and the sensitivity is 25 pmol/mL.
Target Details	This gene encodes a steroid binding protein that was first described as a plasma protein secreted by the liver but is now thought to participate in the regulation of steroid responses. The encoded protein binds each steroid molecule as a dimer formed from identical or nearly identical monomers. The use of alternate promoters and alternatively spliced transcripts have been described. Multiple transcript variants encoding different isoforms have been found for this gene.
Product Precision	Intra-assay Precision (Precision within an assay): CV%<15%



Three samples of known concentration were tested twenty times on one plate to assess.

Inter-assay Precision (Precision between assays): CV%<15%

Three samples of known concentration were tested in twenty assays to assess.

Linearity

To assess the linearity of the assay, samples were spiked with high concentrations of rabbit SHBG in various matrices and diluted with the Sample Diluent to produce samples with values within the dynamic range of the assay.

?	Sample	Serum(n=4)
1:1	Average %	92
	Range %	90-103
1:2	Average %	89
	Range %	83-99
1:4	Average %	95
	Range %	90-101
1:8	Average %	89
	Range %	85-100

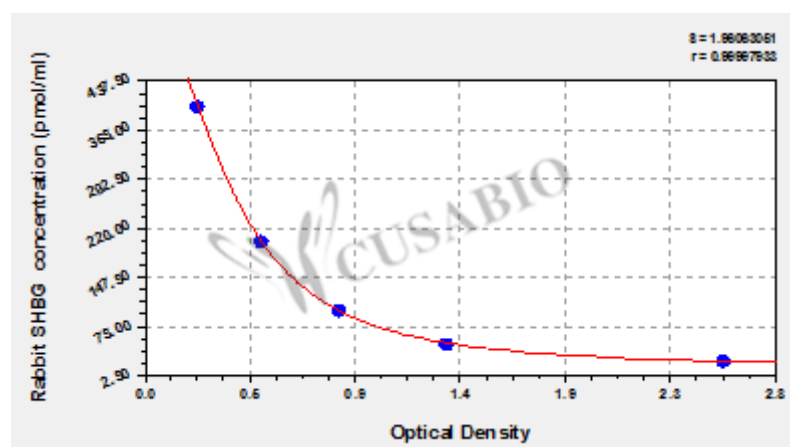
Recovery

The recovery of rabbit SHBG spiked to levels throughout the range of the assay in various matrices was evaluated. Samples were diluted prior to assay as directed in the Sample Preparation section.

Sample Type	Average % Recovery	Range
Serum (n=5)	95	87-100
EDTA plasma (n=4)	95	89-101

Typical

These standard curves are provided for demonstration only. A standard curve should be generated for each set of samples assayed.



pmol/ml	OD1	OD2	Average	?
400	0.266	0.252	0.259	?
200	0.528	0.541	0.535	?
100	0.874	0.863	0.869	?
50	1.348	1.325	1.337	?
25	2.511	2.552	2.532	?