



Human Acid sphingomyelinase-like phosphodiesterase 3b(SMPDL3B) ELISA kit

Product Code	CSB-EL021850HU
Abbreviation	SMPDL3B
Target Name	sphingomyelin phosphodiesterase, acid-like 3B
Uniprot No.	Q92485
Alias	RP11-460I13.1, ASML3B, acid sphingomyelinase-like phosphodiesterase acid sphingomyelinase-like phosphodiesterase 3B
Product Type	ELISA Kit
Immunogen Species	Homo sapiens (Human)
Sample Types	serum, plasma, tissue homogenates, cell lysates
Detection Range	0.625 ng/mL-40 ng/mL
Sensitivity	0.156 ng/mL
Assay Time	1-5h
Sample Volume	50-100ul
Detection Wavelength	450 nm
Lead Time	3-5 working days after you place the order, and it takes another 3-5 days for delivery via DHL or FedEx.
Research Area	Signal Transduction
Gene Names	SMPDL3B
Tag Info	quantitative
Protein Description	Sandwich
Description	This Human SMPDL3B ELISA Kit was designed for the quantitative measurement of Human SMPDL3B protein in serum, plasma, tissue homogenates, cell lysates. It is a Sandwich ELISA kit, its detection range is 0.625 ng/mL-40 ng/mL and the sensitivity is 0.156 ng/mL.
Product Precision	<p>Intra-assay Precision (Precision within an assay): CV%<8% Three samples of known concentration were tested twenty times on one plate to assess.</p> <p>Inter-assay Precision (Precision between assays): CV%<10% Three samples of known concentration were tested in twenty assays to assess.</p>
Linearity	



To assess the linearity of the assay, samples were spiked with high concentrations of human SMPDL3B in various matrices and diluted with the Sample Diluent to produce samples with values within the dynamic range of the assay.

?	Sample	Serum(n=4)
1:1	Average %	86
	Range %	83-89
1:2	Average %	92
	Range %	89-97
1:4	Average %	100
	Range %	95-105
1:8	Average %	90
	Range %	87-93

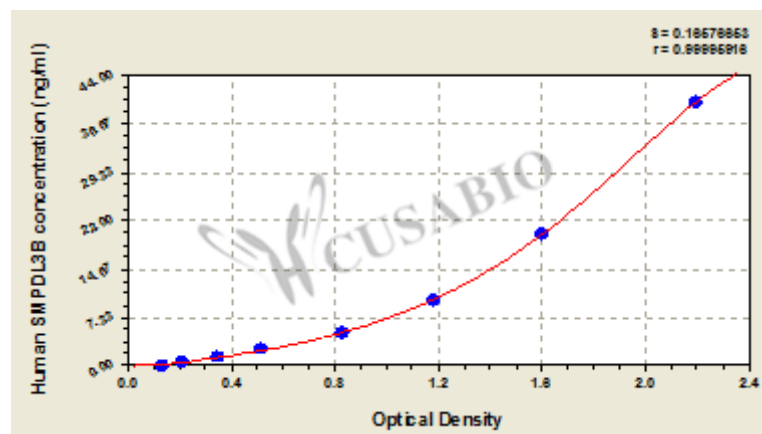
Recovery

The recovery of human SMPDL3B spiked to levels throughout the range of the assay in various matrices was evaluated. Samples were diluted prior to assay as directed in the Sample Preparation section.

Sample Type	Average % Recovery	Range
Serum (n=5)	104	100-108
EDTA plasma (n=4)	99	95-103

Typical

These standard curves are provided for demonstration only. A standard curve should be generated for each set of samples assayed.



ng/ml	OD1	OD2	Average	Corrected
40	2.243	2.102	2.173	2.031
20	1.545	1.632	1.589	1.447
10	1.149	1.201	1.175	1.033
5	0.825	0.835	0.830	0.688
2.5	0.505	0.531	0.518	0.376
1.25	0.345	0.362	0.354	0.212
0.625	0.224	0.215	0.220	0.078
0	0.144	0.140	0.142	?

Msds

{"0":{"fileurl":"https://www.cusabio.com/uploadfile/msds/MSDS CSB-EL021850HU.pdf","filename":"MSDS"}}}