



Fish transforming growth factor, beta 1 (TGFB1) ELISA kit

Product Code	CSB-EL023446FI																
Abbreviation	TGFB1																
Target Name	transforming growth factor, beta 1 (TGFB1)																
Product Type	ELISA Kit																
Immunogen Species	Fish																
Sample Types	serum, plasma																
Detection Range	6.25 ng/mL-400 ng/mL																
Sensitivity	3.12 ng/mL																
Assay Time	1-5h																
Sample Volume	50-100ul																
Detection Wavelength	450 nm																
Lead Time	3-5 working days after you place the order, and it takes another 3-5 days for delivery via DHL or FedEx.																
Research Area	Signal Transduction																
Tag Info	quantitative																
Protein Description	Sandwich																
Description	This Fish TGFB1 ELISA Kit was designed for the quantitative measurement of Fish TGFB1 protein in serum, plasma. It is a Sandwich ELISA kit, its detection range is 6.25 ng/mL-400 ng/mL and the sensitivity is 3.12 ng/mL.																
Product Precision	Intra-assay Precision (Precision within an assay): CV%<8% Three samples of known concentration were tested twenty times on one plate to assess. Inter-assay Precision (Precision between assays): CV%<10% Three samples of known concentration were tested in twenty assays to assess.																
Linearity	To assess the linearity of the assay, samples were spiked with high concentrations of fish TGFB1 in various matrices and diluted with the Sample Diluent to produce samples with values within the dynamic range of the assay. <table><tr><td>?</td><td>Sample</td><td>Serum(n=4)</td></tr><tr><td>1:1</td><td>Average %</td><td>90</td></tr><tr><td></td><td>Range %</td><td>88-95</td></tr><tr><td>1:2</td><td>Average %</td><td>92</td></tr><tr><td></td><td>Range %</td><td>85-105</td></tr></table>		?	Sample	Serum(n=4)	1:1	Average %	90		Range %	88-95	1:2	Average %	92		Range %	85-105
?	Sample	Serum(n=4)															
1:1	Average %	90															
	Range %	88-95															
1:2	Average %	92															
	Range %	85-105															



1:4	Average %	97
	Range %	90-102
1:8	Average %	95
	Range %	90-105

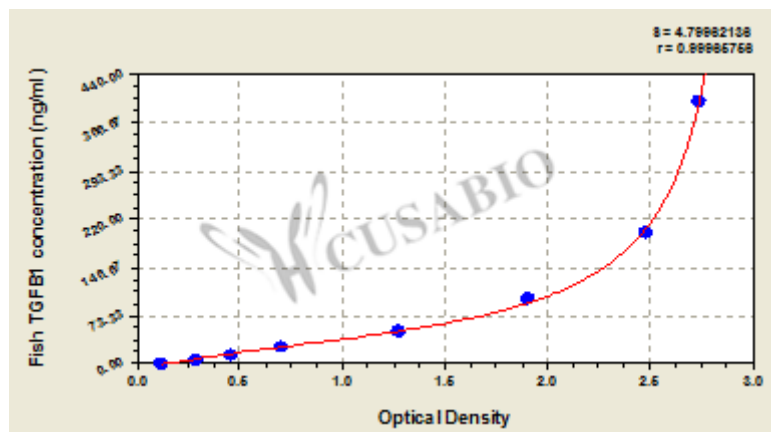
Recovery

The recovery of fish TGFB1 spiked to levels throughout the range of the assay in various matrices was evaluated. Samples were diluted prior to assay as directed in the Sample Preparation section.

Sample Type	Average % Recovery	Range
Serum (n=5)	95	82-98
EDTA plasma (n=4)	94	85-99

Typical

These standard curves are provided for demonstration only. A standard curve should be generated for each set of samples assayed.



ng/ml	OD1	OD2	Average	Corrected
400	2.745	2.723	2.734	2.610
200	2.493	2.451	2.472	2.348
100	1.894	1.914	1.904	1.780
50	1.271	1.286	1.279	1.155
25	0.716	0.702	0.709	0.585
12.5	0.458	0.467	0.463	0.339
6.25	0.289	0.296	0.293	0.169
0	0.125	0.123	0.124	?

Msds

{"0":{"fileurl":"https://www.cusabio.com/uploadfile/msds/MSDS CSB-EL023446FI.pdf","filename":"MSDS"}}