



Sheep Transforming growth factor beta-1(TGFB1) ELISA kit

Product Code	CSB-EL023446SH
Abbreviation	TGFB1
Target Name	transforming growth factor, beta 1
Uniprot No.	P50414
Alias	CED, DPD1, LAP, TGFB, TGFbeta, TGF-beta 1 protein latency-associated peptide
Product Type	ELISA Kit
Immunogen Species	Ovis aries (Sheep)
Sample Types	serum, plasma
Detection Range	15.6 ng/mL-1000 ng/mL
Sensitivity	3.9 ng/mL
Assay Time	1-5h
Sample Volume	50-100ul
Detection Wavelength	450 nm
Lead Time	3-5 working days after you place the order, and it takes another 3-5 days for delivery via DHL or FedEx.
Research Area	Signal Transduction
Gene Names	TGFB1
Tag Info	quantitative
Protein Description	Sandwich
Description	This Sheep TGFB1 ELISA Kit was designed for the quantitative measurement of Sheep TGFB1 protein in serum, plasma. It is a Sandwich ELISA kit, its detection range is 15.6 ng/mL-1000 ng/mL and the sensitivity is 3.9 ng/mL.
Product Precision	<p>Intra-assay Precision (Precision within an assay): CV%<8% Three samples of known concentration were tested twenty times on one plate to assess.</p> <p>Inter-assay Precision (Precision between assays): CV%<10% Three samples of known concentration were tested in twenty assays to assess.</p>
Linearity	



To assess the linearity of the assay, samples were spiked with high concentrations of sheep TGFB1 in various matrices and diluted with the Sample Diluent to produce samples with values within the dynamic range of the assay.

?	Sample	Serum(n=4)
1:1	Average %	93
	Range %	86-102
1:2	Average %	90
	Range %	82-99
1:4	Average %	95
	Range %	91-99
1:8	Average %	97
	Range %	93-110

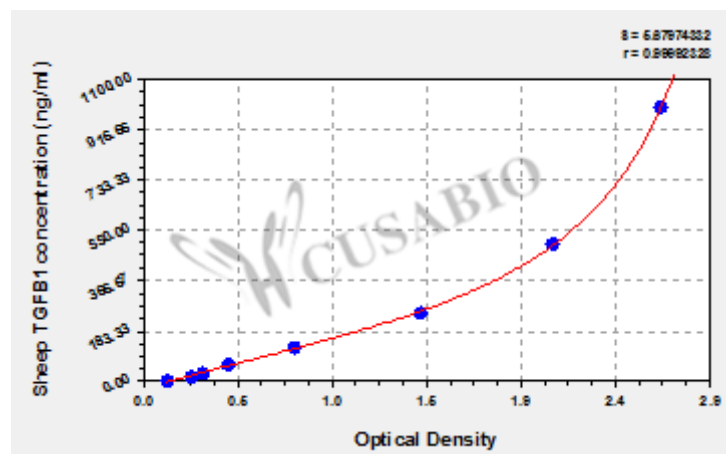
Recovery

The recovery of sheep TGFB1 spiked to levels throughout the range of the assay in various matrices was evaluated. Samples were diluted prior to assay as directed in the Sample Preparation section.

Sample Type	Average % Recovery	Range
Serum (n=5)	96	89-101
EDTA plasma (n=4)	97	87-105

Typical

These standard curves are provided for demonstration only. A standard curve should be generated for each set of samples assayed.



ng/ml	OD1	OD2	Average	Corrected
1000	2.695	2.634	2.665	2.534
500	2.127	2.098	2.113	1.982
250	1.429	1.431	1.430	1.299
125	0.775	0.798	0.787	0.656
62.5	0.446	0.454	0.450	0.319
31.25	0.308	0.325	0.317	0.186
15.6	0.251	0.262	0.257	0.126
0	0.125	0.136	0.131	?

Msds

{"0":{"fileurl":"https://www.cusabio.com/uploadfile/msds/MSDS CSB-



EL023446SH.pdf", "filename": "MSDS"}}}