



Human Translationally-controlled tumor protein(TPT1) ELISA kit

Product Code	CSB-EL024134HU		
Abbreviation	TPT1		
Target Name	tumor protein, translationally-controlled 1		
Uniprot No.	P13693		
Alias	FLJ27337, HRF, TCTP, p02, fortilin histamine-releasing factor		
Product Type	ELISA Kit		
Immunogen Species	Homo sapiens (Human)		
Sample Types	serum, plasma, tissue homogenates, cell lysates		
Detection Range	12.5 pg/mL-800 pg/mL		
Sensitivity	3.12 pg/mL		
Assay Time	1-5h		
Sample Volume	50-100ul		
Detection Wavelength	450 nm		
Lead Time	3-5 working days after you place the order, and it takes another 3-5 days for delivery via DHL or FedEx.		
Research Area	Immunology		
Gene Names	TPT1		
Tag Info	quantitative		
Protein Description	Sandwich		
Description	This Human TPT1 ELISA Kit was designed for the quantitative measurement of Human TPT1 protein in serum, plasma, tissue homogenates, cell lysates. It is a Sandwich ELISA kit, its detection range is 12.5 pg/mL-800 pg/mL and the sensitivity is 3.12 pg/mL.		
Product Precision	<p>Intra-assay Precision (Precision within an assay): CV%<8% Three samples of known concentration were tested twenty times on one plate to assess.</p> <p>Inter-assay Precision (Precision between assays): CV%<10% Three samples of known concentration were tested in twenty assays to assess.</p>		
Linearity	<p>To assess the linearity of the assay, samples were spiked with high concentrations of human TPT1 in various matrices and diluted with the Sample Diluent to produce samples with values within the dynamic range of the assay.</p> <table> <tr> <td>Sample</td><td>Serum(n=4)</td></tr> </table>	Sample	Serum(n=4)
Sample	Serum(n=4)		



1:1	Average %	92
	Range %	87-97
1:2	Average %	97
	Range %	93-103
1:4	Average %	84
	Range %	81-89
1:8	Average %	89
	Range %	83-95

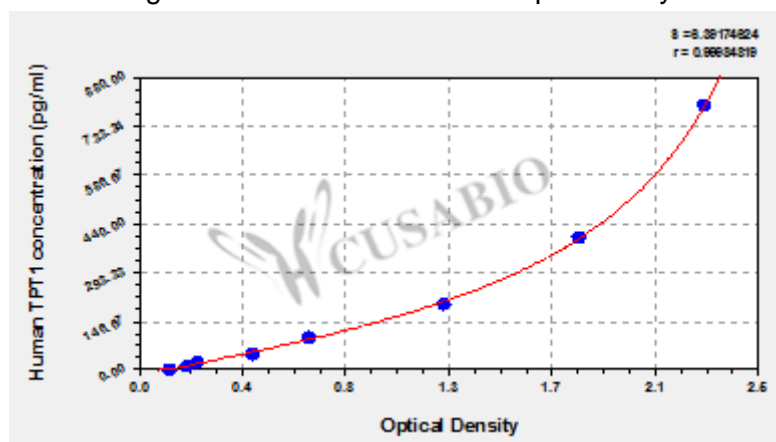
Recovery

The recovery of human TPT1 spiked to levels throughout the range of the assay in various matrices was evaluated. Samples were diluted prior to assay as directed in the Sample Preparation section.

Sample Type	Average % Recovery	Range
Serum (n=5)	102	97-107
EDTA plasma (n=4)	92	89-96

Typical

These standard curves are provided for demonstration only. A standard curve should be generated for each set of samples assayed.



pg/ml	OD1	OD2	Average	Corrected
800	2.352	2.236	2.294	2.161
400	1.799	1.777	1.788	1.655
200	1.218	1.255	1.237	1.104
100	0.679	0.709	0.694	0.561
50	0.454	0.480	0.467	0.334
25	0.245	0.236	0.241	0.108
12.5	0.202	0.205	0.204	0.071
0	0.127	0.138	0.133	

Msds

{"0":{"fileurl":"https://www.cusabio.com/uploadfile/msds/MSDS CSB-EL024134HU.pdf","filename":"MSDS"}}}