



Mouse Translationally-controlled tumor protein(TPT1) ELISA kit

Product Code	CSB-EL024134MO			
Abbreviation	TPT1			
Target Name	tumor protein, translationally-controlled 1			
Uniprot No.	P63028			
Alias	FLJ27337, HRF, TCTP, p02, fortilin histamine-releasing factor			
Product Type	ELISA Kit			
Immunogen Species	Mus musculus (Mouse)			
Sample Types	serum, plasma, tissue homogenates, cell lysates			
Detection Range	9.37 pg/mL-600 pg/mL			
Sensitivity	2.34 pg/mL			
Assay Time	1-5h			
Sample Volume	50-100ul			
Detection Wavelength	450 nm			
Lead Time	3-5 working days after you place the order, and it takes another 3-5 days for delivery via DHL or FedEx.			
Research Area	Immunology			
Gene Names	Tpt1			
Tag Info	quantitative			
Protein Description	Sandwich			
Description	<p>This Mouse TPT1 ELISA Kit was designed for the quantitative measurement of Mouse TPT1 protein in serum, plasma, tissue homogenates, cell lysates. It is a Sandwich ELISA kit, its detection range is 9.37 pg/mL-600 pg/mL and the sensitivity is 2.34 pg/mL.</p>			
Product Precision	<p>Intra-assay Precision (Precision within an assay): CV%<8%</p> <p>Three samples of known concentration were tested twenty times on one plate to assess.</p> <p>Inter-assay Precision (Precision between assays): CV%<10%</p> <p>Three samples of known concentration were tested in twenty assays to assess.</p>			
Linearity	<p>To assess the linearity of the assay, samples were spiked with high concentrations of mouse TPT1 in various matrices and diluted with the Sample Diluent to produce samples with values within the dynamic range of the assay.</p> <table><tr><td>?</td><td>Sample</td><td>Serum(n=4)</td></tr></table>	?	Sample	Serum(n=4)
?	Sample	Serum(n=4)		



1:1	Average %	86
	Range %	80-91
1:2	Average %	93
	Range %	86-98
1:4	Average %	97
	Range %	92-102
1:8	Average %	94
	Range %	86-98

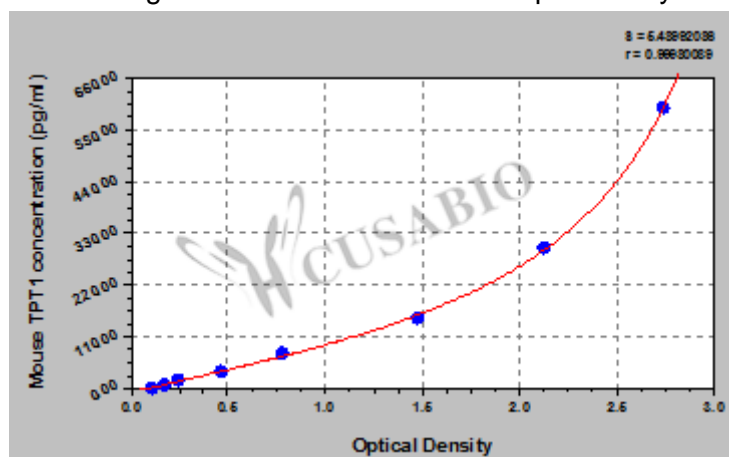
Recovery

The recovery of mouse TPT1 spiked to levels throughout the range of the assay in various matrices was evaluated. Samples were diluted prior to assay as directed in the Sample Preparation section.

Sample Type	Average % Recovery	Range
Serum (n=5)	93	87-97
EDTA plasma (n=4)	90	88-96

Typical

These standard curves are provided for demonstration only. A standard curve should be generated for each set of samples assayed.



pg/ml	OD1	OD2	Average	Corrected
600	2.836	2.672	2.754	2.633
300	2.099	2.184	2.142	2.021
150	1.494	1.483	1.489	1.368
75	0.822	0.765	0.794	0.673
37.5	0.498	0.461	0.480	0.359
18.75	0.267	0.246	0.257	0.136
9.37	0.186	0.178	0.182	0.061
0	0.125	0.117	0.121	?

Msds

{"0":{"fileurl":"https://www.cusabio.com/uploadfile/msds/MSDS CSB-EL024134MO.pdf","filename":"MSDS"}}