



SARS-CoV-2 S1 RBD ELISA Kit

Product Code	CSB-EL33244
Abbreviation	SARS-CoV-2 S1 RBD
Target Name	Novel Coronavirus Spike Glycoprotein RBD (SARS-CoV-2 S1 RBD)
Uniprot No.	P0DTC2
Product Type	ELISA Kit
Sample Types	serum, plasma, swabs
Detection Range	1.25 ng/mL-80 ng/mL
Sensitivity	0.31 ng/mL
Assay Time	1-5h
Sample Volume	50-100ul
Detection Wavelength	450 nm
Lead Time	3-5 working days after you place the order, and it takes another 3-5 days for delivery via DHL or FedEx.
Research Area	Infectious Diseases
Tag Info	quantitative
Protein Description	Sandwich

Product Precision

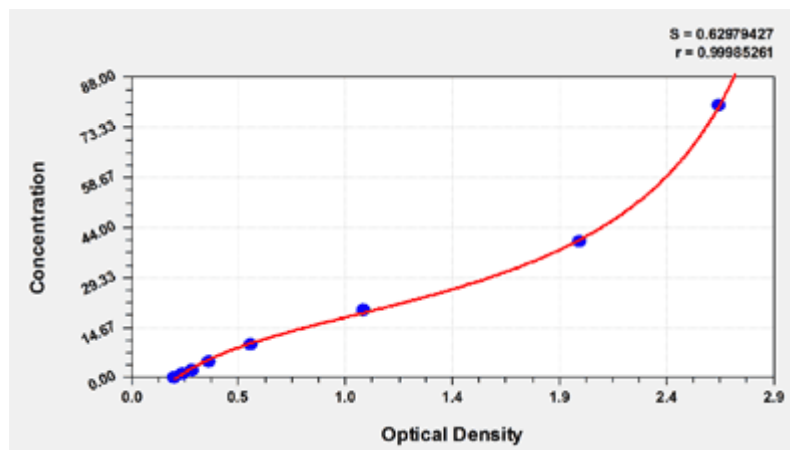
Intra-assay Precision (Precision within an assay): CV%<8%
 Three samples of known concentration were tested twenty times on one plate to assess.

Inter-assay Precision (Precision between assays): CV%<10%
 Three samples of known concentration were tested in twenty assays to assess.

?	Intra-Assay Precision			Inter-Assay Precision		
Sample	1	2	3	1	2	3
n	20	20	20	20	20	20
Mean(ng/ml)	10.79	11.06	11.36	10.85	10.99	10.02
SD	0.032	0.034	0.039	0.041	0.045	0.041
CV(%)	5.53	5.74	6.43	7.05	7.64	7.55

Typical

These standard curves are provided for demonstration only. A standard curve should be generated for each set of samples assayed.



ng/ml	OD1	OD2	Average	Corrected
80	2.648	2.594	2.621	2.409
40	1.973	2.032	2.003	1.791
20	1.027	1.069	1.048	0.836
10	0.559	0.537	0.548	0.336
5	0.365	0.358	0.362	0.150
2.5	0.291	0.285	0.288	0.076
1.25	0.251	0.240	0.246	0.034
0	0.213	0.211	0.212	

Msd

```
{
  "0": {
    "fileurl": "https://www.cusabio.com/uploadfile/msds/MSDS CSB-EL33244.pdf",
    "filename": "MSDS"
  }
}
```