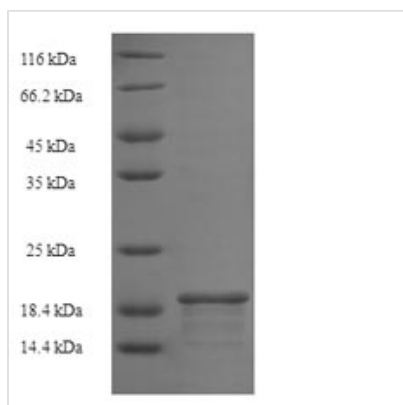




Recombinant Rat Basic leucine zipper transcriptional factor ATF-like 3 (Batf3)

Product Code	CSB-EP002572RA
Relevance	AP-1 family transcription factor that controls the differentiation of CD8+ thymic conventional dendritic cells in the immune syst. Acts via the formation of a heterodimer with JUN family proteins that recognizes and binds DNA sequence 5'-TGA[CG]TCA-3' and regulates expression of target genes. Required for development of CD8-alpha+ classical dendritic cells (cDCs) and related CD103+ dendritic cells that cross-present antigens to CD8 T-cells and produce interleukin-12 (IL12) in response to pathogens .
Storage	The shelf life is related to many factors, storage state, buffer ingredients, storage temperature and the stability of the protein itself. Generally, the shelf life of liquid form is 6 months at -20°C/-80°C. The shelf life of lyophilized form is 12 months at -20°C/-80°C.
Uniprot No.	P97876
Alias	Jun dimerization protein 1 ;JDP-1
Product Type	Recombinant Protein
Immunogen Species	Rattus norvegicus (Rat)
Purity	Greater than 90% as determined by SDS-PAGE.
Sequence	MSQGPPAGGVLQSSVAAPGNQPQSPKDDDRKVRREKKNRVAAQRSRKKQT QKSDKLHEEHESLEQENSVLRREIAKLKEELRHLTEALKEHEKMCPLLLCPMN FVQLRPDPVASWSAHDAPDHPSFIWLGTLV
Lead Time	Delivery time may differ from different purchasing way or location, please kindly consult your local distributors for specific delivery time.
Research Area	Others
Source	E.coli
Gene Names	Batf3
Expression Region	1-133aa
Notes	Repeated freezing and thawing is not recommended. Store working aliquots at 4°C for up to one week.
Tag Info	N-terminal 6xHis-tagged
Mol. Weight	19.1kDa
Protein Description	Full Length
Image	



(Tris-Glycine gel) Discontinuous SDS-PAGE (reduced) with 5% enrichment gel and 15% separation gel.

Reconstitution

We recommend that this vial be briefly centrifuged prior to opening to bring the contents to the bottom. Please reconstitute protein in deionized sterile water to a concentration of 0.1-1.0 mg/mL. We recommend to add 5-50% of glycerol (final concentration) and aliquot for long-term storage at -20°C/-80°C. Our default final concentration of glycerol is 50%. Customers could use it as reference.