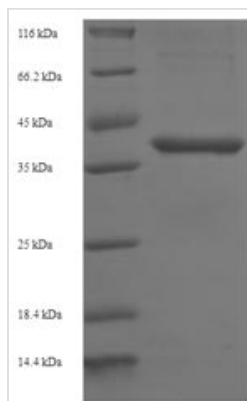




Recombinant Human B-cell lymphoma/leukemia 10 (BCL10)

Product Code	CSB-EP002608HU
Relevance	Involved in adaptive immune response . Promotes apoptosis, pro-caspase-9 maturation and activation of NF-kappa-B via NIK and IKK. May be an adapter protein between upstream TNFR1-TRADD-RIP complex and the downstream NIK-IKK-IKAP complex. Is a substrate for MALT1 .
Storage	The shelf life is related to many factors, storage state, buffer ingredients, storage temperature and the stability of the protein itself. Generally, the shelf life of liquid form is 6 months at -20°C/-80°C. The shelf life of lyophilized form is 12 months at -20°C/-80°C.
Uniprot No.	O95999
Alias	B-cell CLL/lymphoma 10 ;hCLAPCED-3/ICH-1 prodomain homologous E10-like regulator ;CIPER;Cellular homolog of vCARMEN ;cCARMENCellular-E10 ;c-E10Mammalian CARD-containing adapter molecule E10 ;mE10
Product Type	Recombinant Protein
Immunogen Species	Homo sapiens (Human)
Purity	Greater than 90% as determined by SDS-PAGE.
Sequence	MEPTAPSLTEEDLTEVKKDALENLRVYLCEKIIAERHFDHLRAKKILSREDTEEIS CRTSSRK RAGKLLDY LQENPKGLDTLVESIRREKTQNFLIQKITDEV LKLRNIKL EHLKGLKCSSCEPFPDGATNNLSRSNSDES NFSEKLRASTVMYHPEGESSTT PFFSTNSSLNLPVLEVGR TIENTIFSSTTLPRPGDPGAPPLPPDLQLEEEGTCAN SSEMFLPLRSRTVSRQ
Lead Time	3-7 business days
Research Area	Apoptosis
Source	E.coli
Gene Names	BCL10
Expression Region	1-233aa
Notes	Repeated freezing and thawing is not recommended. Store working aliquots at 4°C for up to one week.
Tag Info	N-terminal 6xHis-SUMO-tagged
Mol. Weight	42.3kDa
Protein Description	Full Length
Image	



(Tris-Glycine gel) Discontinuous SDS-PAGE (reduced) with 5% enrichment gel and 15% separation gel.

Reconstitution

We recommend that this vial be briefly centrifuged prior to opening to bring the contents to the bottom. Please reconstitute protein in deionized sterile water to a concentration of 0.1-1.0 mg/mL. We recommend to add 5-50% of glycerol (final concentration) and aliquot for long-term storage at -20°C/-80°C. Our default final concentration of glycerol is 50%. Customers could use it as reference.