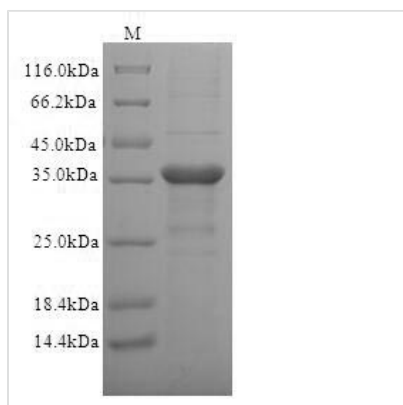




Recombinant Human T-cell surface glycoprotein CD1c (CD1C), partial

Product Code	CSB-EP004891HU
Relevance	Antigen-presenting protein that binds self and non-self lipid and glycolipid antigens and presents them to T-cell receptors on natural killer T-cells.
Storage	The shelf life is related to many factors, storage state, buffer ingredients, storage temperature and the stability of the protein itself. Generally, the shelf life of liquid form is 6 months at -20°C/-80°C. The shelf life of lyophilized form is 12 months at -20°C/-80°C.
Uniprot No.	P29017
Alias	CD_antigen: CD1c
Product Type	Recombinant Protein
Immunogen Species	Homo sapiens (Human)
Purity	Greater than 90% as determined by SDS-PAGE.
Sequence	NADASQEHVSFHVIQIFSFVNQSWARGQGSGWLDELQTHGWDSESGTIIFLH NWSKGNFSNEELSDLELLFRFYLFGLTREIQDHASQDYSKYPFEVQVKAGCEL HSGKSPEGFFQVAFNGLDLLSFQNTTWVPSPGCGSLAQSVCHLLNHQYEGVT ETVYNLIRSTCPRFLLGLLDAGKMYVHRQVRPEAWLSSRPSLGSGQLLLVCHA SGFYPKPVWVTWMRNEQEQLGTHKGDILPNADGTWYLQVILEVASEEPAGLS CRVRHSSLGGQDIILYWGHHFSM
Lead Time	3-7 business days
Research Area	Immunology
Source	E.coli
Gene Names	CD1C
Expression Region	18-302aa
Notes	Repeated freezing and thawing is not recommended. Store working aliquots at 4°C for up to one week.
Tag Info	N-terminal 6xHis-tagged
Mol. Weight	36.2kDa
Protein Description	Partial
Image	



(Tris-Glycine gel) Discontinuous SDS-PAGE (reduced) with 5% enrichment gel and 15% separation gel.

Description

The gene encoding the Human CD1C protein (18-302aa) is incorporated into a plasmid vector to generate recombinant plasmid, which is then introduced into e.coli cells. The e.coli cells containing the recombinant plasmid are selected and cultured under conditions that stimulate the expression of the gene of interest. A N-terminal 6xHis tag is attached to the protein. After expression, affinity purification is employed to isolate and purify the recombinant Human CD1C protein from the cell lysate. Denaturing SDS-PAGE is utilized to resolve the resulting recombinant Human CD1C protein, revealing a purity level exceeding 90%.

Reconstitution

We recommend that this vial be briefly centrifuged prior to opening to bring the contents to the bottom. Please reconstitute protein in deionized sterile water to a concentration of 0.1-1.0 mg/mL. We recommend to add 5-50% of glycerol (final concentration) and aliquot for long-term storage at -20°C/-80°C. Our default final concentration of glycerol is 50%. Customers could use it as reference.