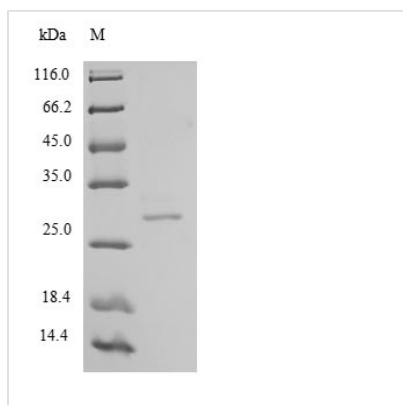




Recombinant Human Chymotrypsin-like elastase family member 2A (CELA2A)

Product Code	CSB-EP005196HU
Relevance	Acts upon elastin.
Storage	The shelf life is related to many factors, storage state, buffer ingredients, storage temperature and the stability of the protein itself. Generally, the shelf life of liquid form is 6 months at -20°C/-80°C. The shelf life of lyophilized form is 12 months at -20°C/-80°C.
Uniprot No.	P08217
Alias	Elastase-2A
Product Type	Recombinant Protein
Immunogen Species	Homo sapiens (Human)
Purity	Greater than 90% as determined by SDS-PAGE.
Sequence	VVGGEEARPNSWPWQVSLQYSSNGKWYHTCGGSLIANSWVLTAAHCISSSR TYRVGLGRHNLYVAESGSLAVSVSKIVVHKDWNSNQISKGNIDIALKLANPVSL TDKIQLACLPPAGTILPNNYPCYVTGWGRLQTNGAVPDVLQQGRLLVVDYATC SSSAWWGSSVKTSMICAGGDGVISSCNGDSGGPLNCQASDGRWQVHGIVSF GSRLGCNYYHKPSVFTRVSNYIDWINSVIANN
Lead Time	3-7 business days
Research Area	Cell Biology
Source	E.coli
Gene Names	CELA2A
Expression Region	29-269aa
Notes	Repeated freezing and thawing is not recommended. Store working aliquots at 4°C for up to one week.
Tag Info	N-terminal 6xHis-tagged
Mol. Weight	29.9kDa
Protein Description	Full Length of Mature Protein
Image	



(Tris-Glycine gel) Discontinuous SDS-PAGE (reduced) with 5% enrichment gel and 15% separation gel.

Reconstitution

We recommend that this vial be briefly centrifuged prior to opening to bring the contents to the bottom. Please reconstitute protein in deionized sterile water to a concentration of 0.1-1.0 mg/mL. We recommend to add 5-50% of glycerol (final concentration) and aliquot for long-term storage at -20°C/-80°C. Our default final concentration of glycerol is 50%. Customers could use it as reference.