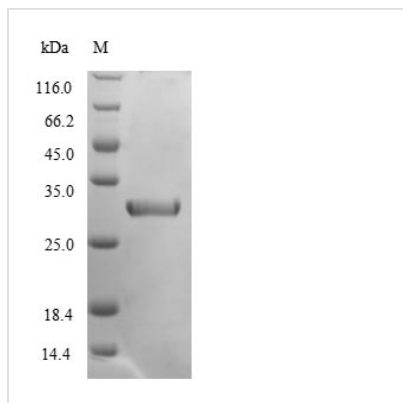


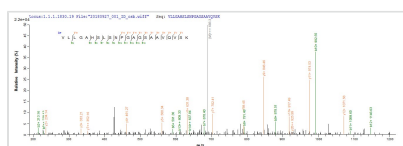


Recombinant Mouse Chymotrypsin-like elastase family member 2A (Cela2a)

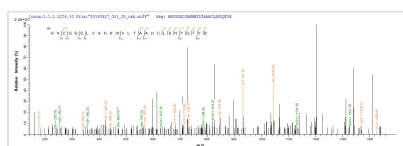
Product Code	CSB-EP005196MO
Relevance	Acts upon elastin.
Storage	The shelf life is related to many factors, storage state, buffer ingredients, storage temperature and the stability of the protein itself. Generally, the shelf life of liquid form is 6 months at -20°C/-80°C. The shelf life of lyophilized form is 12 months at -20°C/-80°C.
Uniprot No.	P05208
Alias	Elastase-2Elastase-2A
Product Type	Recombinant Protein
Immunogen Species	Mus musculus (Mouse)
Purity	Greater than 90% as determined by SDS-PAGE.
Sequence	VVGGQEATPNTWPWQVSLQVLSSGRWRHNCGGSLVANNWVLTAAHCLSNY QTYRVLLGAHSLSNPGAGSAAVQVSKLVVHQRWNSQNVGNGYDIALIKLASP VTLSKNIQTACLPPAGTILPRNYVCYVTGWGLLQTNGNSPDTLRQGRLLVVDY ATCSSASWWGSSVKSSMVCAGGDGVTSSCNGDSGGPLNCRASNGQWQVH GIVSFGSSLGCNYPRKPSVFTRVSNYIDWINSVMARN
Lead Time	3-7 business days
Research Area	Others
Source	E.coli
Gene Names	Cela2a
Expression Region	31-271aa
Notes	Repeated freezing and thawing is not recommended. Store working aliquots at 4°C for up to one week.
Tag Info	N-terminal 6xHis-tagged
Mol. Weight	29.7kDa
Protein Description	Full Length of Mature Protein
Image	



(Tris-Glycine gel) Discontinuous SDS-PAGE (reduced) with 5% enrichment gel and 15% separation gel.



Based on the SEQUEST from database of E.coli host and target protein, the LC-MS/MS Analysis result of CSB-EP005196MO could indicate that this peptide derived from E.coli-expressed Mus musculus (Mouse) Cela2a.



Based on the SEQUEST from database of E.coli host and target protein, the LC-MS/MS Analysis result of CSB-EP005196MO could indicate that this peptide derived from E.coli-expressed Mus musculus (Mouse) Cela2a.

Reconstitution

We recommend that this vial be briefly centrifuged prior to opening to bring the contents to the bottom. Please reconstitute protein in deionized sterile water to a concentration of 0.1-1.0 mg/mL. We recommend to add 5-50% of glycerol (final concentration) and aliquot for long-term storage at -20°C/-80°C. Our default final concentration of glycerol is 50%. Customers could use it as reference.